

BERING STRAITS AGLUKTUK

VOLUME 2 NUMBER 6 PUBLISHED BY BERING STRAITS NATIVE CORPORATION AUGUST EDITION

Bering Straits Federal Credit Union

BOB MADDEN

The Bering Straits Federal Credit Union began operations on Monday, August 19th. Business is being conducted in the Kawerak Inc. office located on Front street in Nome, Alaska. Membership in the Credit Union is open to all enrollees of the Bering Straits Native Corporation and to all Natives served by the Bering Straits Native Association, their immediate families, and employees of the Regional Corporation and allied organizations.

The Bering Straits Federal Credit Union offers easy ways to save your dollars. A member can make deposits in person; save by mail; establish joint accounts or utilize special services such as a trust account. When you want to withdraw money from your account, there is never a charge and same day service is guaranteed.

About dividends; any purchase of shares made by the 10th of any month will earn a full months dividend if you leave those shares in your account until the end of the dividend period. This is another way that your credit union makes it easy for you to have your savings grow.

For the protection of each members account in the Bering Straits Federal Credit Union, the National Credit Union Administration, a permanent Federal Agency, insures every account up to \$20,000.00. Your money can work for you with no risk involved.

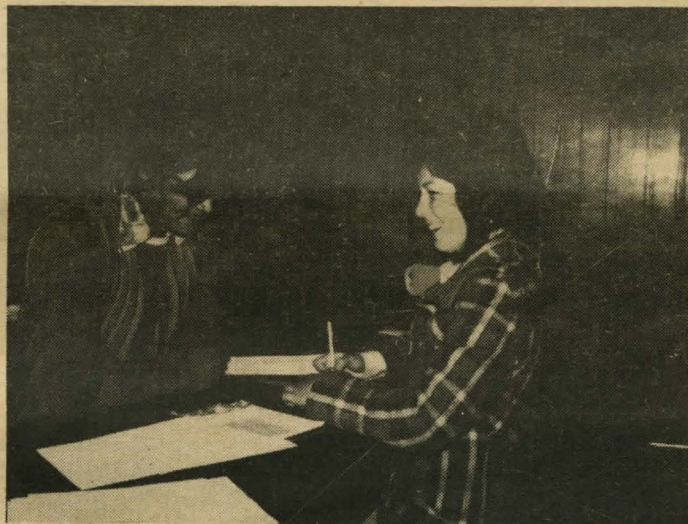
To provide for the future, each member receives free life insurance. That is, for every dollar in your account, you receive a dollars worth of free life insurance, up to \$2,000.00. This applies to each individual member, so every person in your family can be protected.

A member does not have to live within the region to take advantage of our services. As long as a minimum balance of \$5.00 is maintained, your membership is guaranteed and our services are open to you. Our loan service is as near as your mail box.

The Bering Straits Federal Credit Union will provide prompt, courteous loan services and "next day" approval on most loan requests. At Bering Straits Federal Credit Union, the maximum rate of interest on a loan is 12% annually. There are no extra or hidden charges, no minimum fees; and no short rate rebates. Again, the Federal Government regulates the conditions of the loan.

The following policy concerning the terms and conditions of obtaining a loan have been established by the Bering Straits Federal Credit Union. This policy will be used by the Credit Committee and loan officer in administering loans.

1. Signature Loans- Your signature is a 11 the Credit Committee will require as security. Maximum Amount-\$800.00
Maximum Terms-24 months
Interest Rate-12% annually
(1% per month of unpaid balance)



First investor Isaac Piscoya presents Bobbie Kasgnoc with his Land Claims check to be invested in the Bering Straits Federal Credit Union.

2. Secured Loans- A loan obtained by using property as security.

Maximum Amount-\$5,000.00

Maximum Terms-48 months

Interest Rate-12% annually

(1% per month on unpaid balance)

3. Loans secured by Pledge of Shares - To obtain a loan, a member can use his or her shares as collateral.

Maximum Amount - 10% of the amount of dollars the Credit Union has available.

Maximum Terms-120 months

Interest Rate-9% (3/4 of 1% per month on the unpaid balance)

Requests for loans will be considered on their individual merits and will subject to the above outlined policy.

The amount, terms, and collateral requirements on each loan are left to the discretion of the Credit Committee. All loans are subject to available resources of the Credit Union.

The Bering Straits Federal Credit Union is operated by a Board of Directors elected by the members. Also a full time staff of two is maintained to serve the membership. Accounting will be fully computerized to insure prompt and accurate maintenance of accounts.

The Board of Directors consists of:

George Walters - President

Dan Karmum - Vice-President

Martin Olson - Secretary

Larry Davis - Member

Herbert Ivanoff - Member

The manager is Bob Madden and the cashier is Bob Kasgnoc.

We urge all qualified potential members to take advantage of the benefits offered by the Bering Straits Federal Credit Union.

It is your Credit Union administered through Bering Straits Native Corporation and all Regional Village Corporations.

Office hours are 9 a.m. and 1 p.m., Monday thru Friday. Come in and let the Kawerak staff explain to you, what the Credit Union is; How it operates; how to join; and what financial benefits are available to you for your future security.

A training and promotional team will be traveling to all villages in the region to further explain the operation and benefits of this savings and loan institution. Radio notice will be given in advance.

DISTRIBUTION

by robbie

fagerstrom

Time is near again for our next distribution to all eligible enrollees, both At-Large and village stockholders of our Region.

This distribution is scheduled for October, but depends on the Federal government depositing their share of the \$70,000,000.00 into the Alaska Native Fund on schedule as specified by Section 6(c) which states, "All money in the Fund shall be distributed at the end of each three months of the fiscal year (July 1), among the Regional Corporations organized pursuant to Section 7, on the basis of the relative number of natives enrolled in each Region.

If the Federal government is not on schedule with their deposit, we will have to make distribution in the next quarter which will be either December 1974 or January 1975.

A F N CONVENTION

The AFN Convention will be held on October 24, 25, and 26, 1974 in Anchorage. If you are going to attend, you should start planning for it now. As soon as more information is received from AFN, the Regional Corporation will send the information to the Village Corporations.

BERING STRAITS AGLUKTUK

editors

betty leonard
elsie murdock

typists

lois larsen
isabelle douglas

bsnc box 1008 nome, alaska



Village erosion of Shishmaref. Will the village be moved????

SHISHMAREF RELOCATION

BY CLIFF WEYJOUANNA

As the result of August 22, 23, 1974 meeting with Federal, State, local agencies, the village of Shishmaref at this time will not be moved. The intent of the meeting was to seek assistance in moving the village this coming winter, but due to soils that would not provide stable foundation for buildings in the new location site, approximately five miles from the present location, the move was cancelled temporarily.

The only suitable location for the new site is approximately 45 miles, which is not suitable for the people, due to distance subsistence hunters would have to cover to Serpentine, Arctic River flats. This suitable location is also located in the Inalik (Dio-mede) withdrawal area, which would mean negotiation on land with Inalik Native Corp.

The only solution to the present erosion problem is to set a seawall on those areas, where private homes are endangered. The local governing organizations of Shishmaref are now in the process of providing a seawall possible combination of sand bags and empty drums, while studies are made on other relocation sites.

In order for Corp. of Engineers to make complete studies on other location sites, it would mean a special appropriation of funds from Congress to complete the studies. Due to time involved in obtaining these funds, it was necessary to seek short-term assistance in protecting what remains.

A complete up-to-date report was printed in booklet form on progress of relocation, and for those villages that are thinking of relocating this booklet could be made available to them.

Land Use Planning Report

APRIL to AUGUST, 1974 richard atuk

During this period we concentrated on land selection applications for core townships. This includes proper legal descriptions and land status checks. Core Township applications have been submitted by a 11 eligible Village Corporations.

Assistance has also been given to Village Corporations in making their land selections.

To date, there is one village, Sitnasuak (Nome Village Corporation) which has finalized its selection and is in the process in being prepared for submission. Unalakleet is also very close to final selections and several township applications are already in process.

There are new guidelines for processing Native Allotments including "blanket selection" for Village Corporations. This means that the lands which the village selects include Native Allotments which are not yet patented. This office has assisted in amending recent Core Township applications to select over Native Allotments.

We feel that this practice will be most beneficial for the allotment applicant. Village Corporation and the Regional Corporation. If a Native Allotment becomes approved, then the allotment applicant will receive title, if some reason the allotment is not approved, then the Village Corporation will receive title to that land. Unless this is done, there is a danger of a "hole" in our selection (or Village Corporation selections), meaning that there would be unpatented federal land within our private land. We have continued to plan and study our resources for selection. We have done some evaluation work and will continue in this process. In cooperation with the Federal-State Land Use Planning Commission, we are working on a Land Seminar. A Land Seminar was held in Unalakleet and Golovin earlier in the year, and trained personnel in or near those villages. This next one is scheduled for the second or third week of September and is tentatively planned for Teller and Nome. Commission members will present a mock selection, and resources are then evaluated. This is important as it gives the Village Corporations another viewpoint on land selection. The office has continued to monitor events in the areas of easements and related matters which will affect land selections and future management of the same lands. This included hearings held on the Western Access Route in Nome and a position paper which was presented to the Land Use Planning Commission. Our staff geologist continues to present mineral evaluation maps to villages which have not yet received them, and in addition, Diane Tweet is doing field checks in Village withdrawals to gain more information in mineral potential. Perhaps one of the most important developments in Land Use Planning has been the initiation of a Land Management Committee Bering Straits Native Corporation Board Members on this committee are:

Martin Olson, Chairman
Bill Barr, Member
Oscar Koutchuk, Member
Buster Seelkoke, Member
Morris Coffey, Member
Morris Kugzruk, Member

Richard Atuk is the Staff Associate. This committee met prior to the last board meeting to present ideas and to make recommendations to the Board of Directors in matters such as 12B distribution and possible intervention in village disputes over land. We feel that committee will be instrumental in initiating land use policies for further Bering Straits Native Corporation and also in assisting with development programs for Land Use Planning for Bering Straits and the Village Corporations.

ANNUAL MEETINGS
TOM PUNGUK

Teller and King Island.
The villages of King Island and Teller Native Corporation are now preparing to hold their stockholders annual meeting during the month of September 1974. Here again, we'd like to stress the importance of the stockholders presence for the quorum, which is 51% of the total population. Teller with enrollment total of 271, requirement of 137 people to be present in person or by proxy is needed. The village of King Island with enrollment total of 205, will require 104 people present in person or by proxy. Until these two village corporations have the quorum, they cannot convene their annual meetings.

It should be a great concern to the stockholders of these corpora-

tions to be present, as Board of Directors will be elected, compensation pay to the elected board will be voted on, possible quorum reduction from 51% to 33 1/3% will be voted on, plus ratification of action taken by the interim board.

Also reports will be made by the interim President and the staff on progress and investment plans of the corporation.

For those stockholders of Teller Native Corporation the meeting will be held Saturday, September 7, 1974, with registration to start at 1:00 p.m.

The King Island Native Corporation Annual Meeting, will be on the 10th of September, to start at 1:00 p.m.

FUTURE TRAVEL AND TRAINING

Also the Village Affairs Staff

is planning some travel this fall to help with the Board of Directors. It is felt that some sort of training should be planned to familiarize the Board of Directors with their responsibilities and with corporate, State and Federal laws concerning corporations.

It is possible that we may plan on holding some sort of sub-regional training at some of the villages where two or more villages could get together for this.

The village corporations will be contacted as to when the best time could be used and for how long these sessions could last. Also if there are any ideas or suggestions, it would help if the village corporations could submit them to us here at the regional office.

PLEASE
SEND IN
YOUR
CORRECT
ADDRESS
IF YOU HAVE
MOVED.

WINTER
OIL
SAVINGS

Mary's Igloo (Teller) recently purchased a 4,000 gallon fuel truck from Seattle, it is due to arrive in Nome about the first of September. Oil and gas purchased in Nome and delivered to Teller by their new fuel truck will offer savings to the stockholders living in Teller who purchased oil and gas from this new service.

VILLAGE
AFFAIRS
AND IT'S
RESPONSIBILITIES

The following are some of the guidelines and responsibilities as followed by the Village Affairs Staff of B. S. N. C.

1. Co-ordinate all problems faced by organizations in the villages along with the Native Corporations between them and the Regional Corporation
2. Oversee Village Native Corporation activities to protect with Regional and Village interests.
3. Co-ordinate all other agency plans and, projects that affect Regional and Village interests.
4. Develop villages or groups to follow guidelines of ANCSA
5. Develop village businesses and act if called as Executive Vice-President representative.

A reminder to all village and organizations in the villages that we are available upon request to travel to the village to attend meetings and provide help in any way if necessary. Also we would like comments from the different organizations.

WALES WATER
POLLUTION!

BY CLIFF WEYIOUANNA

August 25, 1974, a stop was made after receiving information from concerned citizens of Wales on their winter water source. The contractors that are building the airport had established a gravel pit on an area where the water was obtained during winter months, which is now polluted with oil. The natural spring that existed there provided the village with water when the springs located above the village is no longer usable, due to freezing.

Water samples are now being sent to the lab for chemical analysis.

COMMERCIAL FISHING
ON
NORTON SOUND

The Norton Sound Fisherman's Cooperative venture Fishing Field seems to have been a very successful one. Through the first part of August the Co-op shipped out over 855,000 pounds of salmon to California Oyster Co. in Los Angeles, California.

The Norton Sound salmon is extremely bright and firm fish when caught in the ice cold waters of Norton Sound. This is an excellent salmon to market especially in the lower "48" or foreign countries.

Now that the quantity is known and a market has been established, thanks to the dedication and hard work of the management of the Co-op, the Norton Sound Fisherman can look forward to an even greater and prosperous fishing season next year.

Tim Towarak, General Manager, of Unalakleet Native Corporation will be able to give the stockholders a better picture of their successful operation in the September issue of the "Agluktuk".

ENROLLMENT by Robbie Fagerstrom

We have recently received from the Alaska Native Enrollment office an up-dated printout to the certified roll which was signed by the Secretary of Interior, Roger C. B. Morton on December 17, 1974.

A number of stockholders enrollment status has been changed, due to the Regional solicitor and enrollment coordinating office making their final decisions on appeals of column 16 changes, new eligible additions, corrections to the certified roll, i.e. duplicates, last name changes, etc.

The following is the current enrollment total for all our villages:

(056)	Brevig Mission	135
(177)	Golovin	172
(219)	Inalik	100
(253)	King Island	205
(270)	Koyuk	188
(299)	Mary's Igloo	109
(352)	Nome	2,065
(435)	Shaktoolik	207
(438)	Shishmaref	310
(457)	St. Michael	255
(460)	Stebbins	273
(480)	Teller	272
(509)	Unalakleet	839
(521)	Wales	167
(525)	White Mountain	202
(543)	At-Large	1,255
	Other	146
	Reservation	1,100
TOTAL		8,000

SITNASUAK NATIVE CORPORATION-Jerry Trigg

The Corporation is just about complete with its land selection application. We see that once it is complete, the work of the Land Selection Committee and staff will not stop. Planning the land's use and management of the land will replace its responsibility.

Mr. Thomas Drake has resigned from our Board upon appointment as the Executive Vice President of BSNC. The Board will appoint someone to fill the vacancy created.

Another vacancy soon to be filled will be Sharon Nagozruk's position of the Land Committee. Any shareholder who would like to be considered for vacancies should notify the corporation.

Arctic Native Brotherhood is building an addition to their present office building occupied by BSNC. Sitnasuak has accepted their offer to rent space of 20' x 30'. We will be moving in on completion.

The meeting times of the corporation is to be changed from Wednesday evening to Tuesday evening. This change will be effective September 3. The meetings of the corporation are open to its shareholders. We urge their visitation to the meetings and at the office.

The corporation is approaching the Arctic Native Brotherhood to hold a potlatch jointly. Those in the immediate area will be informed of the date.

The corporation urges persons interested in prospecting or mining to become familiar with mining laws and patent proceedings. Within our region there are many patented areas to be aware of. These areas can only enter for mining prior to going into the field.

The requirements for carrying a mining claim to patent are very strict. The Bureau of Land Management has published a procedural guide for obtaining patent to a mining claim, and copies are available in the Sitnasuak and Bering Straits Native Corporation offices, Bureau of Land Management, Bureau of mines and the Division of Lands.

BERING STRAITS NATIVE CORPORATION BOARD OF DIRECTORS

Many of the stockholders wonder how the Corporation is run. (Following are the steps in brief.) First of all you the stockholder started it when you elected your Board of Directors. The Board of Directors make the decisions on how it is run and what direction it will go. The Executive Vice President carries out the orders of the Board of Directors and the Executive Committee. The Executive Vice President with help from the Vice Presidents sees that the duties of all the Departments are carried out and the day to day business of the office is conducted in an orderly manner.

Remember you the stockholders elected the Board of Directors to run this Corporation. For those of you who are interested in writing to your Directors to express your opinions and ideas listed below are their names and addresses. Also the names of persons on the various committees.

BOARD OF DIRECTOR OPENING

THE BOARD OF DIRECTORS
AT THE NEXT BOARD MEET-
WILL BE SELECTING A MEM-
BER FOR THE BOARD. PLEASE
SUBMIT ANY NAMES THAT
YOU WISH TO HAVE CONSID-
ERED FOR THE VACANCY.

(Con't from page 5)

Jerome Trigg, Sr., President
P. O. Box 1008
Nome, Alaska 99762
PHONE: Highways-5266
Home-----2647

Martin Olson, 1st Vice President
Golovin, Alaska 99762
PHONE: 2916

Steve Dickson, 2nd Vice President
P. O. Box 727
Nome, Alaska 99762
PHONE: Home-----2617
Greens-----2561

Henry Ahgupuk, Secretary
Shishmaref, Alaska 99772
PHONE: 649-3501

Chuck Fagerstrom, Treasurer
P. O. Box 946
Nome, Alaska 99762
PHONE: Store-----2999
Home-----2576

Z. Bill Barr
Shishmaref, Alaska 99772
PHONE: 649-3201

Morris Coffey
Stebbins, Alaska 99671
PHONE: 2929

Representative Chuck Degran
Pouch V
Juneau, Alaska 99801

Oscar Koutchak
P. O. Box 293
Nome, Alaska 99762
PHONE: Home-----2035

Morris Kugzruk
Teller, Alaska 99778
PHONE: 3780

Alfred Nakak
P. O. Box 545
Nome, Alaska 99762
PHONE: Home-----2072

Mike Saclamana
P. O. Box 188
Nome, Alaska 99762
PHONE: Home-----2857

Buster Seelkoke
Wales, Alaska 99783
PHONE: 2936

Barbara Trigg
5806 E. Northern Lights Boulevard
Apt. 4A
Anchorage, Alaska 99504
PHONE: 333-1520

communities, and give us the freedom to make our own choices and mistakes and to profit from them.

We are proud of our citizenship but not the limits that are placed upon it. We are proud of our willingness and ability to serve in our nation's defense. We now wish to contribute to its economy by becoming self-sufficient & independent people. We expect to use the money to which we are justly entitled to prepare our coming generation to take advantage of the opportunities and the choices which this nation can offer to them. We want our children and our children's children to be proud of their past and their heritage as American Eskimos, American Aleuts or American Indians.

Thank you.

BOARD MEETING

There will be a Board of Directors Meeting on September 24 and 25, 1974.

NOTICE

ARTICLES NEEDED.
COMMENTS AND/OR
COMPLAINTS GREATLY
APPRECIATED. SEND
IN BEFORE THE 15th
OF EVERY MONTH.

BY JEROME TRIGG

Taken from the Congressional Record of October 23, 1969.

Mr. Chairman, Honorable members of the Committee, Ladies and Gentlemen, on behalf of the Alaska native, I should like to welcome you to Alaska, and to thank you for this opportunity to enter testimony concerning issues vital to survival of our people, "The Alaska Natives". I am Jerome Trigg, Sr., of Arctic Native Brotherhood. Our organization's office is in Nome, Alaska which is located on the Bering Sea coast of Seward Peninsula. My people are called in English, the Kawerak Nation of Eskimo.

It is proper and fitting that a brief history of our past as it relates to the issues before us today be included in this testimony. We have recorded the history in the memory of our people, and what we know to be true has been proven by the research of scientists.

Our people in the beginning lived in caves when Alaska was tropical. Later after a disaster of three days and nights of eclipse of the sun, we started having seasons. We have used our land wisely since time before the coming of the white man. We of the Seward Peninsula were an organized nation, proud and unconquered. We didn't waste anything for we needed everything for survival. Both from the land and the sea, we had our hunting and fish areas.

One could not infringe on others unless permission was given. Once yearly there were meetings of chiefs from all the villages to map out agreements. In time of trouble, all villages assisted those who were being attacked. We drove the warlike Siberian natives back, though there were others that were friendly and traded with us.

We didn't know of the Russians, much less that they were in our part of the world. Nor did we know about the United States. We were strong and proud, and today we still feel that we own the Seward Peninsula.

We have traded the products of the sea: seal oil, seal skins, dried meat, dried fish, rawhide ropes, and many other items to the inland natives for caribou hides, squirrel skins, copper, jade slate and other items. We crisscross the peninsula in search of game and fish and to trade with each other. Due to the short season and long winter, it takes a vast area of land to produce the game and fish the native needs.

Before the white man, the natives lived in sod huts, partially underground and warm. Today the Eskimo lives in cardboard shacks in the worst poverty in the nation.

I have briefly described a nation of people who live wisely and carefully. We are peaceful hard-working tax-paying people, able to make what we have go a long way. Our deep loyalty to the United States is well known. The graves of our men killed in the Arctic on patrols of World War II and other graves from later wars in other parts of the world, speak for us.

We have been isolated and forgotten because we are a quiet people who must work constantly to stay alive. Some of our people have been left behind the times, as things changed and the riches of our lands were needed by this nation and other countries of the world.

We did not invent the wheel, but the wheel does not work on tundra and snow. We developed sleds instead, and the skin boats. We have learned to adapt to new things if they are useful: outboard motor, snow machine and other items.

I would like to give a few reasons why we desire and need a full and just settlement. First, I would like to point out that we are permanent residents. Even after our land was exploited we remained. We love our land. We have united with the Alaska Federation of Natives. We are proud to be part of that organization.

We are in need of housing with utilities. We have Eskimo kids that never have baths. We have much skin disease and ear problems. Many related health problems due to poor housing and water problems.

We have one of the lowest death ages of any group in the nation.

We cannot borrow from banks to build houses, for you must have an adequate income to pay a loan back. Our children are going to school in distant places. We want them home. We would like to improve our villages to meet modern living conditions with running water. We would like to send our children in institutions of higher learning of our choice. We would like job training for the workers of our area.

We do not want to always live off the taxes that other people pay. We want to earn our own way and pay taxes to support public services we all need, and to have the same freedom to make the choices in our lives that other people do.

The single greatest cause for our present situation, as second-class citizens, is too much dependence on welfare and decision-making by government agencies.

The gold rush, even for all the gold taken from native lands, left the native worse off. Will the oil rush trample us too, and destroy the game and resources of the wide areas of land we still must depend on for food and clothing? The native, too, desires to benefit from development of the resources of the land but we wish, for once, to guide this development so that our children will never have to suffer the hardships that absentee exploitation brought to my generation and older generations.

We are prepared to take on the job of managing a large sum of money and to invest that money in our people, the future generation of our people, and in the good of our State and our nation.

If the settlement is too small, we will only be able to attack the symptoms of our problems. This is all that tax money spent so far has been able to do. There must be large settlements in the beginning to establish the system and the means of accomplishing all that must be done. There must be a regular amount of money which can be expected and planned for.

We think that the Federation's proposal for 40 million acres, and \$500 million with a two percent overriding royalty is a reasonable and just solution to our land claims. This combination of ownership in land and settlement money will allow the native people to promote and guide development of the land. This proposal will allow us to meet the demands of the future.

We believe that our Eskimo lands were illegally sold without our knowledge or consent by a country which had not conquered or lived on those lands. We also believe that our lands were sold by Russia to the United States when neither country had true knowledge of their use, occupation or ownership. We believe we are justly entitled to payments for non-renewable resources which were removed without benefit to our people and for the lands which are now occupied by the descendants of others.

We have here in Alaska native bank officers, commercial airline pilots, commercial boat and barge operators, airline managers, and other executives, air station managers, military officers, and school teachers. We have members of our people in other states who occupy a wide range of occupation. We have some native corporations.

The money received in the final settlement will provide the capital to enable us to obtain education, advice, and technical assistance for ourselves and our children. It will provide the foundation and support for private ownership of property and business. It will equip us to compete for jobs and to obtain funds for major construction in our com-

(Con't. on page 4)

13th REGION QUESTIONS

by George Walters

BSNC is still receiving many letters on the following questions:

(1) Who are the persons that will be enrolled in the 13th Region? (Am I in it?)

(2) When will it be formed and where will the 13th Region office be located?

(3) Can I change my vote?

(4) What are the benefits and how much will I receive if I am enrolled in the 13th Region?

Answers to the above questions are as follows:

(1) The persons who are eligible to be enrolled in the 13th Region are those eligible applicants who claimed (or placed) in Column 16 on their enrollment application an out of state address (such as Seattle, Washington, San Francisco, California or any place outside the State of Alaska). These applicants then had a right to vote Yes or No on the establishment of the 13th Region in Column 22 on their enrollment application forms.

(2) If a majority of all eligible natives eighteen (18) years of age or older and who are not permanent residents of Alaska elected to be enrolled in the 13th Region, then the Secretary shall establish such a Region for non-resident Alaska Natives. If a majority elected not to be enrolled in the 13th Region then they will be enrolled in one of the twelve regions (At-Large) as to the priority of:

(1) The Region where the Native resided on the 1970 census date if he had resided there without substantial interruption for two or more years;

(2) The Region where the Native previously resided for an aggregate of ten years or more;

(3) The Region where the Native was born; and

(4) The Region from which an ancestor of the Native came.

Only those persons (and dependent members of their household who are under 18 years old) who vote Yes will be enrolled in the 13th Region if it is established. All persons (and their dependents) who vote No are enrolled "At-Large" in the Region. The 13th Region, if it is established, will probably be located in the city where a majority of the non-residents reside, probably in Seattle or California.

In December of 1973, the 13th Regional vote was tabulated and a majority of those eligible voters voted against the formation of the 13th Region. The Secretary of the Interior then declared the 13th Region would not be established as prescribed by the Act. Shortly after this announcement, the Alaska Federation of Natives International in Seattle, Washington and the Alaska Native Association of Oregon filed suit against the Secretary and the Enrollment Office protesting the manner in which the votes were counted and other matters pertaining to the enrollment such as request for changes as to their permanent residence, vote changes, etc. This case is still pending before Judge Gashe in Washington, D.C., and until such time as a decision is made, the 13th Region is not established.

(3) The Enrollment Office in Anchorage states that no changes of votes or requests for changes will be honored by the Enrollment Office, as the deadline for changes is past and the roll was certified on December 17, 1973.

(4) The benefits of those persons found eligible under the Act and who are enrolled in the 13th Region if it is established will receive the monetary settlement from the 962.5 million dollars.

continued on pg. 7

SUMMARY OF BOARD OF DIRECTORS MEETING AUGUST 8 & 9, 1974

APPROVED: Minutes of June 14 & 15 Board Meeting.

APPROVED: BSNC obtaining insurance for the Flynn Building in Teller. Insurance to cover fire, liability, and vandalism.

RECOMMENDED: The Land Management Committee recommended that the 12(b) lands be distributed by 1/2 subsistence needs and 1/2 based on population of village - with 70% of the selection given to the Village Corporations and 30% retained by the Regional Corporation for selection of best possible lands in the Region.

AUTHORIZED: A letter to be written to the Secretary of the Interior supporting a strong position of attempting to enroll all eligible natives up to the end of December 1974.

DISCUSSED: Need for an office building in the near future and projected cost and size.

DISCUSSED: Meeting of the Personnel Committee. Three things will be looked into by the Personnel Committee - addition to the office building, sewer lines, and getting insurance for the new employees not covered by the retirement plan.

DISCUSSED: Changes in our present By-Laws - more research needed. To be presented at our next meeting.

AUTHORIZED: \$105,000 loan to the Norton Sound Fishermen's Co-op from the Unalakleet Native Corporation.

RECOMMENDED: Harry Carter for a position on the Limited Entry Commission.

AUGUST 9, 1974

ADOPTED: Recommendations from the Finance Committee. Also budget as proposed by the Finance Committee.

APPROVED: Loan to Stebbins IRA Council from Stebbins Native Corporation in the amount of \$55,000 with following recommendations: increase mark-up, restrict credit.

AUTHORIZED: Wales Native Corporation to place on deposit \$10,000 in the Bering Straits Federal Credit Union.

RECOMMENDED: Finance Committee to work with Morris Kugzruk on the fuel truck for Teller/Mary's Igloo and make a recommendation to the Executive Committee.

AUTHORIZED: Appropriate corporate officers and staff to enter into a loan agreement with the Seattle First National Bank to implement the joint ventures of BSNC and Central Construction Company in construction project, yet to be awarded with some general terms and conditions. George Bell designated to be the official liaison between BSNC and Central Construction with the understanding that all developments be brought to our attention.

APPOINTED: Tom Drake, Executive Vice-President of BSNC effective August 16 1974.

NOTICE TO EX-GUARDSMEN

ATTENTION ALL DISCHARGED, RETIRED AND BENEFICIARIES OF DECEASED ARMY NATIONAL GUARDSMEN:

As a result of a recent court decision making the military pay increase effected by Executive Order 11778 retroactive for National Guardsmen for the period 1 October 1972 through 31 December 1972, you may be entitled to retroactive payment. Former members who are discharged, retired, and beneficiaries of deceased guardsmen who are now residing in Alaska, regardless of their state affiliation during the period concerned, should use the form below to submit their application for payment. Further information may be obtained by calling 272-9412 in Anchorage, or by contacting your nearest Army National Guard Unit.

TO: THE ALASKA ARMY NATIONAL GUARD
USPFO FOR ALASKA
DRAWER 8989
ANCHORAGE, ALASKA 99508

DATE

I, the undersigned, do hereby make application for Retroactive Pay increase due me * in accordance with Executive Order 11778 during the period 1 October through 31 December 1972.

NAME: LAST FIRST MIDDLE INITIAL

GRADE (during 1 Oct thru 31 Dec 72):

YEARS OF SERVICE THRU: October 1972 November 1972 December 1972

SSAN:

Name and address of unit assigned during 1 Oct - 31 Dec 72: (If not a unit member during that period, indicate under whose jurisdiction):

CLAIM PAY FOR: (Include Dates and/or number of assemblies per day)

Inactive Duty Training:

1/ Full Time Training Duty:

2/ Active Duty for Training:

Initial Active Duty for Training (REP 63):

Annual Training:

NAME AND ADDRESS OF FINANCE & ACCOUNTING OFFICE that made original payment. Give Disbursing Station Symbol Number (DSSN), Disbursing Officer Voucher (DOV) Number, and DATE OF PAYMENT, if known.

DSSN

DOV

DATE OF PAYMENT

MY CURRENT MAILING ADDRESS IS:

STREET

CITY AND STATE

ZIPCODE

SIGNATURE OF CLAIMANT

* Beneficiaries indicate the "individual named below"

1/ For Army National Guard

2/ For U.S. Army Reserve

What does the symbol (or special indicator for the computer) in front of your enrollment number mean???????

*04-region - 352-village number, this is the place you enrolled to, 02371-your enrollment number taken from your enrollment application form.

04-352-43217 space space or nothing in front of number means this applicant enrolled (Column 16) to the village he or she was living in at the time he or she filled out the enrollment application forms.

*04-352-83171 asterisk space means this applicant enrolled to village he or she was not living in at the time of enrollment; example, a person living in Anchorage at the time he or she filled out the application but enrolled (Column 16) to Nome.

*04-352-02371 asterisk means this applicant enrolled to a village and he or she was living outside of Alaska at the time he or she filled out the enrollment application; example, a person living in Seattle, California, Hawaii, or someplace in Europe but enrolled (Column 16) to Nome.

*04-543-31371 space asterisk or nothing asterisk means this applicant enrolled (Column 16) to a city or place outside of Alaska. The applicant was then enrolled to the Region based on the 1st tie to Alaska in Column 18 through 21 on their enrollment application form; example, a person put in Column 16, Oakland, Ca., and his or her first tie to Alaska showed in Column 20 that he or she was born in Teller, then that person and his or her minor dependents on the same application form are enrolled "At-Large".

NOTE: The place named in Column 16 on the enrollment application form is the place you are enrolled to.

13th Region
cont. from pg. 6

Each person enrolled to the 13th Region will receive 50% of their share and 50% will be retained by the 13th Regional Corporation.

Following is a breakdown of the monies distributed from the 962.5 million dollars:

(1) \$462,500,000 from the general fund of the Treasury, which are authorized to be appropriated according to the following schedule:

(A) \$12,500,000 during the fis-

cal year in which this Act becomes effective. (The Act was signed into law December 18, 1971).

(B) \$50,000,000 during the second fiscal year;

(C) \$70,000,000 during each of the third, fourth, and fifth fiscal years;

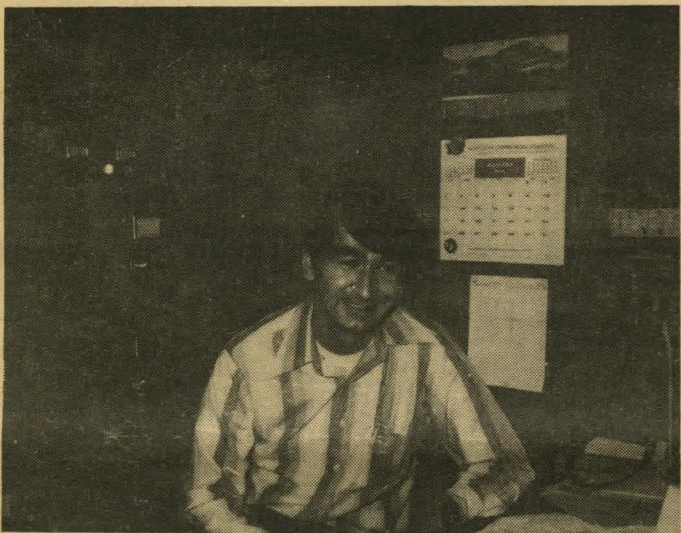
(D) \$40,000,000 during the sixth fiscal year; and

(E) \$30,000,000 during each of the next five fiscal years.

The remaining \$500 million will

cont. on pg. 8

NEW EMPLOYEES



TOM DRAKE - Newly appointed Executive Vice-President



BETSY KOTONGAN - Accounting Clerk I - replacing Josie Reader. Betsy was born and raised in Gambell, Alaska. She graduated from West High School in Anchorage.

BERING STRAITS
FEDERAL CREDIT
UNION

- lowest interest on loans
- highest interest on savings
- no additional charges for Share, Life or Credit Insurance

office hours 9am to 1pm
monday thru friday

Box 505
Nome, Alaska 99762
Telephone 443-5231

"IT'S WHERE
YOU BELONG"

13th Region
cont. from pg. 7

come from the United States and State of Alaska. 2 percentum of all revenues derived from bonuses, rentals, minerals, oil and gas royalties, leases or sales received by the United States and the State of Alaska after the date of the Act, will be paid into the Alaska Native Fund within 60 days from the date the revenues are received by the United States and the State of Alaska. The 2 percentum requirement shall continue on ly until the \$500 million has been paid into the Alaska Native Fund (as per Section 9 of the Act). This money as it comes into the Native Fund will then be distributed to the Regional Corporations on a per capita basis then down to the individual stockholders. This will be all the benefits the 13th Region will receive and when the last payment is made, then it can truly be said that those persons enrolled in the 13th Region will have extinguished their aboriginal rights, titles, and claims to their land.

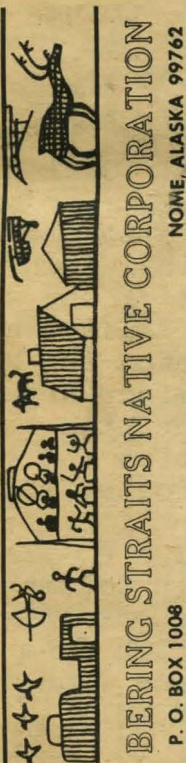
NOTICE

The Department of National Marine Fisheries Service intends to hold public hearings on the proposed listing of Authentic Native Articles of Handicraft and Clothing September 24, 1974 at Nome, Alaska at 9:00 a.m. in the District Court chambers.

This public hearing is concerning the listings of crafts made by natives for purpose of resale from sea mammals. Comments should be made in person or by mail concerning the list as it will affect people in our area.

The list will be inserted to the Sea Mammal Act of 1972 if final decision is made.

Bulk Rate U.S. Postage
PAID
Nome, Alaska 99762
PERMIT No. 12



Address Correction Requested