

From the Vice President's Desk



THE FUTURE AND VILLAGE CORPORATIONS

By
John Tetpon, Vice President
Village Affairs

At the October meeting of the Board of Directors of BSNC, several changes to the five year plan were adopted. Included in these changes is one small but extremely important item that will have a lasting effect on the villages and the shareholders of this corporation. The language of that paragraph states that BSNC will restructure its board of directors to include a representative from each village. Just how that will be done has not yet been determined.

Also included in the changes to the five year plan was a time frame as to when re-organization will begin.

The plan to re-organize the structure of BSNC will be developed between now and the Annual Meeting set for November 1983. What this all means is that by 1984, if the plan is approved, BSNC will be controlled by the villages. This is something we have worked hard to bring about for quite some time now.

The fact that the present Board has agreed to the idea indicates a willingness which was not present during the May 1982 Annual Meeting of BSNC. As some of us know, a resolution was presented to the stockholders calling for the re-organization of the corporation. It seems we've come a long way since then.

In the months to come, we will be discussing the re-organization plan with all the village corporations and as many shareholders as possible. Each one of us will have some tough decisions to make in the process since a majority of stockholders must approve any re-organization plan by a vote.

Changes come about slowly—and can be a little painful. I hope the elders of this region will become a part of this change so that we younger people do not make unnecessary mistakes.

1983 promises to be a year for change - for the better.

● does it again

Continued from page 1

iture, major home appliances, carpeting, floor coverings, lamps, sewing machines, vacuum cleaners, televisions, radios, calculators and even fishing equipment. In addition, the store has a large inventory of building materials including paneling, lumber, insulation and most importantly Sclaircor insulated pipes. Sclaircor is the special pipe needed to hook up to Nome's new sewer system.

According to Sitnasuak Executive Director, Jack Carpenter, the store's prices are competitive with those in Anchorage. "We deal directly with Seattle and East Coast distributors. As a result, there is no middleman so we can have

lower prices", he explained.

Jim Messer will be in charge of merchandising for both the Country Store and Nome Hardware. He commented, "We are really excited about serving the people of Nome and our new warehouse has 8,400 usable square feet. We are glad to have lumber stored inside. That way we can sell it all winter and not have to dig it out of a snow bank".

"In view of the way Nome is growing, a store like this is really needed", explained Robbie Fagerstrom, President of Sitnasuak Native Corporation. "It is just another way for us to service the community".

WILL FORM

BSNC IS REQUESTING THAT ALL STOCKHOLDERS FILL OUT THE WILL FORM FOUND ON THE BACK OF YOUR STOCK CERTIFICATE. PLEASE BE SURE TO HAVE IT NOTARIZED AND IF THERE IS NO NOTARY AVAILABLE YOU MAY HAVE THE POSTMASTER STAMP IT OR TWO WITNESSES MAY SIGN. UPON COMPLETION SEND TO THE NOME OFFICE AND A PHOTO-COPY WILL BE RETURNED TO YOU. IF YOU DO NOT HAVE YOUR STOCK CERTIFICATE AT HOME PLEASE WRITE AND A COPY WILL BE SENT TO YOU.

Bering Straits Agluktuk

A monthly publication of the Bering Straits Native Corporation, P. O. Box 1008, Nome, Alaska 99762.

Contents include contributions by staff and stockholders of BSNC and its affiliates; edited, with photos and stories by Laura Kosell except as indicated. Letters and articles are welcome if sent to the above address by the second Friday of each month.

Bering Straits Native Corporation, through the staff of AGLUKTUK, reserves the right to edit any and all articles, notices or other items submitted for publication for length, libel, and adherence to the Bering Straits Agluktuk general editorial policy.

Circulation: 5,500

Feature Employee

A hidden talent

We have a star in our midst. Catherine Tobuk has been selected to sing in the Alaskan musical, "Riversong." The musical will be performed nine times in Fairbanks beginning on March 3rd and again at the Haines State Theatre Festival in April. "Riversong" is being produced by the Fairbanks Light Opera Theatre.

"My husband, Roy, saw the ad for the audition in the Doyon Newsletter, explains Catherine. "A lot of people auditioned for parts in Fairbanks last October. I was so surprised when they picked me."

Catherine is best known as the employee who has worked the longest for BSNC. She was hired on September 18, 1982. "I have mainly been the receptionist, but wherever I was needed I would help out", she reflects. "I love meeting people and enjoy talking with them."

Catherine will take a few months leave of absence beginning on January 4th to begin two months of intensive rehearsals in Fairbanks for "Riversong". She will stay with her sister, Frances Testu and brother, Edward Oumauk.

A shareholder of BSNC and Sitnasuak, Catherine was born in Nome to Bob and Flora Oumauk. She attended elementary and high



Catherine Tobuk

school in Nome. At Beltz Vocational School, she received her clerical training.

Married to Roy Tobuk for 35 years, they have three children, Roy, Jr., Wayne and Esther Craft and ten grandchildren.

Catherine has promised to give up the bright lights and glamour of the stage to return to Nome after "Riversong" has its final performance.

Sitnasuak Native Corporation

Meeting the needs



INCH BY INCH—Construction workers hammer away at a fast pace in building Sitnasuak new 14 plex.

Robbie Fagerstrom has a right to be proud. He is President of the most successful as well as one of the largest Village Corporations in Alaska - Sitnasuak Native Corporation. The corporation has 2,600 shareholders and is entitled to 161,000 acres of land.

"We realize that we control our own destiny," Robbie explains. "Every village has the opportunity to be successful. Everyone must sit down and evaluate what needs they have in their community. Then they can develop plans to meet those needs."

Sitnasuak has done just that. As one of the largest businesses in Nome, Sitnasuak has met a multitude of needs.

The corporation is in the preliminary planning stages for constructing a large commercial building on the Nomerama property on Nome's Front Street.

Opened in December, The Country Store sells home furnish-

ings and building materials at reasonable prices. By June of 1983 the Country Store will house a self-serve gasoline station.

Nome Hardware is a well established business in Nome. The community has depended upon its variety of merchandise for years. Both Nome Hardware and The Country Store are managed by Jim Messer.

Another Sitnasuak enterprise, Bonanza, sells gasoline, cars, trucks, snowmachines and 3 wheelers. Managed by shareholder Richard Miller, Bonanza also offers fuel delivery and rent-a-car service.

Sitnasuak is also a landlord. John Garrison manages the 4 plex, 8 plex, 12 plex and 26 plex for a total of fifty rental units. Currently under construction is a 14 plex apartment building.

On Nome's 5th Avenue, Sitnasuak owns seventeen continuous

Continued on page 4

In Focus

Board Member
of the Month



Frances Degnan

"The Bering Straits area is the best place on earth to be. We must continue working to keep it that way so our children can also enjoy it." Practice what you preach. That is precisely what Frances Degnan, our Board Member of the Month, has dedicated her life to doing.

"I take pride in being an Eskimo," reflects Frances. "Our traditional way of thought is based on sharing and caring. In other words if you can help out then do it. Personally, I want to work with the Eskimo people. In fact, most of the work I do is voluntary and not paid. I won't do it otherwise."

Frances is currently active on six boards in the Bering Straits region. A member of the BSNC Board since 1976, she currently serves as Secretary. As BSNC's representative to the Community Enterprise Development Corporation (CEDC) Frances has been Secretary since 1976. CEDC is a non-profit economic development corporation serving the State of Alaska. The corporation provides financial assistance to small, local businesses in the rural community.

As a life long resident of Unalakleet, Frances is deeply involved in her village's affairs. She has been a director of the Unalakleet Native Corporation since 1974. In October 1980 Frances was elected to the Unalakleet City Council. Finally as Secretary of the Bering Straits Coastal Resource Service Area Board, Frances aids in developing a coastal management plan for the region.

As further evidence of her concern for the future of our children, Frances represents Unalakleet on the Board of the Bering Strait School District.

Frances leads a good life. She lives the traditional Eskimo way and, as a result, is self employed. "When you subsist you have no free time. You cannot rely on anyone else to do your work," Frances explains. "I hunt and fish all year around. I really love it."

As a member of the Musk Ox Cooperative, Frances enjoys knitting hats and scarves for sale.

Born and raised in Unalakleet, Frances is one of ten children born to Frank and Ada Degnan.

Frances is well educated. She attended the Unalakleet B.I.A. Day School which was later named after her father. Frank A. Degnan was a highly respected community leader for many years.

After graduation from Mt. Edgecumbe High School, she continued her education at the University of Alaska at Fairbanks. In 1964, Frances graduated with a degree in Psychology and Sociology. Her minor was in Anthropology.

After college, Frances began her active involvement in service to our people. She was a representative to the Inupiat Development Corporation which later became Kawerak, Inc. She lobbied for the AFN for passage of the ANCSA. After its passage she worked with the Alaska Native Enrollment to "get the native roll going."

As Secretary of the Board of Directors of BSNC, Frances feels that, "My 100 shares are not deteriorating. I have a great deal of confidence in Bering Straits Native Corporation."

She continues, "The shareholders must keep abreast of the corporation's doings. We are in good shape and have a lot of potential. We need the support of every shareholder."

"It is our corporation and our land that we are working for," concludes the Secretary of BSNC.

With 1991 not too far away, you can be sure Frances Degnan will strive to keep it that way.

Shareholder Spotlight

Living high on the hog



NOT SO LONG AGO—John and Minnie Fagerstrom are shown in their beautiful Eskimo parkas. Minnie sewed all the detail work. Photo taken in 1938.



80 YEARS OLD—John Fagerstrom led an active life as a towboat captain.

"I used to sing like a son of a gun on the boat. When I was alone I would really sing my heart out," recalls John Fagerstrom, Sr. of his 45 year career as a towboat captain.

"In those early saloon days in Nome they sang anything. One man wanted to take me Outside to sing. I told him I couldn't go because I had a family. He even offered to move my family. It never did 'pan' out."

John Fagerstrom was born September 16, 1902 in Golovin Bay. In 1910 he started elementary school at the Council Public School and later continued at the Golovin Bay Mission Home. In 1914 John's family moved to Unalakleet where he went to school for six more years.

It was at the Golovin Bay Mission Home where John met his future wife, Minnie Curran. "She has been a good wife, I'll tell you that," John is quick to say.

"We were married in Council on April 28, 1922, by Judge Steiner. There was no judge in Golovin so we drove up to Council by dogteam. It was a double wedding with Lena and Abraham Lincoln."

The Fagerstroms raised a houseful of children - "a baker's dozen" as John puts it. Myrtle and Joyce now reside in Nome, Maggie in Golovin, Rose in Anchorage and Doris in Kotzebue. John's sons, Jerry and Ernest live outside. The Fagerstroms lost five children.

John's boating career started in 1917 when he helped his father, Charlie Walters Fagerstrom on a towboat in Golovin. He then worked with the Flavin Company for seven years.

In 1927, the Lomen Brothers bought out Flavin. John was a towboat captain with Lomen for thirty years. Two boats that he sailed, the Carpenter and Yamhill are on the blocks in Nome.

In 1953 when no more freight was moved out of Council or Golovin, the Fagerstroms moved to Nome where John continued working with the Lomen Brothers. In 1958 John began work as a towboat captain for the Army Corps of Engineers.

"The Corps of Engineers was a good outfit. It was a smart move to work for them," reflects John. "After fifteen years I got my retirement."

Over the years, John and Minnie have mushed their dog team many times across Golovin Bay and throughout the Seward Peninsula. John remembers the infamous Nome-Candle dog sled races. "Back then the teams had nice looking blue eyed Huskies who knew the trail. For the dog teams in the 1983 All Alaska Sweepstakes it will be rough. They will have to break trail all the way." John continues, "In the old days the Nome-Candle route was well traveled and lined with telephone poles as a guide. Those folks will be out in the wilderness."

Now that John is retired what do the Fagerstroms like to do most? "When the weather is good, we jump in the car and drive to camp at Sunrise Hill on the Council Road. I've got a pile of wood out there. As soon as the road is open I go," says John in earnest. "We live high on the hog with our hunting and fishing."



HIKE—This photo, taken in the late 1930's, pictures Minnie posing with the Fagerstrom dog team.

IF YOU HAVE MOVED OR CHANGED YOUR MAILING ADDRESS OR HAVE CHANGED YOUR NAME, PLEASE COMPLETE THE FOLLOWING FORM. (IF IT IS A NAME CHANGE PLEASE INCLUDE A COPY OF YOUR MARRIAGE CERTIFICATE) AND SEND TO:

BERING STRAITS NATIVE CORPORATION
P.O. BOX 1008
NOME, AK 99762 or CALL 907-443-5252.

NAME _____

NEW NAME _____

I.D. NO. _____ SS# _____

STREET OR BOX NO. _____ APT NO. _____

CITY _____ STATE _____ ZIP _____

(LIST OTHER STOCKHOLDERS MOVING TO SAME ADDRESS (SPOUSE, CHILDREN)) _____

IF YOU KNOW OF A SHAREHOLDER WHO IS DECEASED, PLEASE WRITE US FOR AN INHERITANCE QUESTIONNAIRE & AFFIDAVIT AND LIST THE NAME OF THE DECEASED SHAREHOLDER _____

PERSON REQUESTING FORM _____

ADDRESS: _____

● Sitnasuak

Continued from page 2

lots. Once sewer and water are installed in the area these lots will also be developed.

In 1981, the Sitnasuak Reindeer Herd borrowed 600 head of reindeer from BIA. Under the direction of Reindeer Coordinator, Art Johnson, Chief Herder Stefan Magnusson and herder, Walter Noyakuk, the reindeer graze on 400,000 acres of land. The Sitnasuak corral is located at Mile 12 on the Teller Road.

The last of the Sitnasuak enterprises was in a joint venture project with Johnson Brothers Construction of Nome. The Sitnasuak Native Corporation Construction Company supplied dump trucks, loaders and bonding for the 1982 Pilgrim Hot Springs access road.

These successful ventures produce total assets of 15 million dollars for Sitnasuak. "In the long run we will offer more than just \$2,000 dividends to our shareholders," according to Robbie Fagerstrom. "With continued successful businesses and management we will be able to provide better benefits. Each project has to pay its own way."

The corporation President continues, "We have done a lot for our shareholders. We have recreational and subsistence campsites. We even have a discount for all the elders in the community - 10 cents/gallon off on fuel cash sales."

Why has Sitnasuak Native Corporation been so successful? Besides a great deal of hard work there are several reasons. There is a strong, experienced board of directors who have been in office for a long time. A sensible, skillful money management enables the corporation to make intelligent decisions.

"Our biggest goal is keeping

our shareholders informed of all of our activities. One way is through our quarterly newsletter, "Venture", says Robbie. "This communication is important because after 1991 we want to keep our shares within Native control. At that time Alaska is going to be one of the last places to buy cheap land. We must hold on to it."

Surprisingly there is a small staff which runs the corporate offices. "Whatever it takes to get the job done we do it," Robbie explains. "Our good, qualified staff has a unique working relationship. We have all worked here quite a long time."

For example Joanne Kost has worked as bookkeeper since 1977; Maggie Kowchee, Secretary/Stock Registrar since 1981; John Garrison, Land and Building Manager since 1978; Art Johnson, Administrative Assistant and Reindeer Coordinator since 1981 and Jack Carpenter, Executive Director since 1979.

Sitnasuak's most important concept is to hire many shareholders as possible. As Robbie Fagerstrom explains, "It is the shareholders responsibility to get educated and gain experience. A qualified stockholder can get employed with Sitnasuak and get promoted up the ladder."

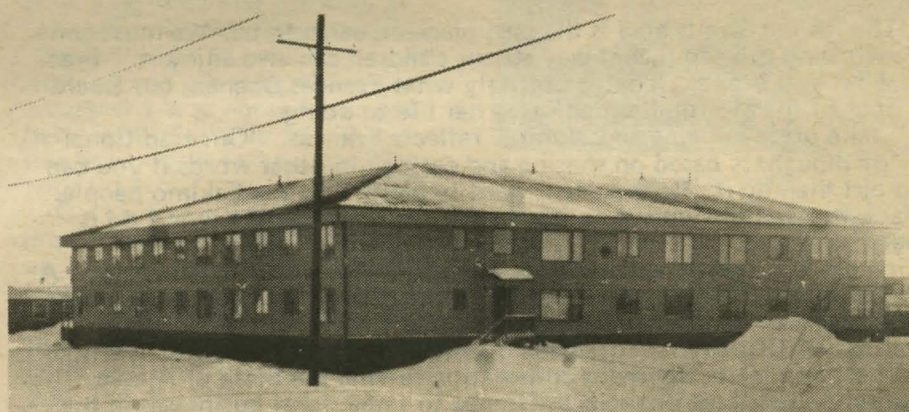
The Sitnasuak Scholarship Program encourages shareholders to further their education after high school. \$1,000 is given to graduating shareholders who are enrolled in college or vocational training programs. A continuing scholarship of \$500 per year is given for each year of full time enrollment. In addition, any shareholder can get up to \$150 per year for courses taken at Northwest Community College.

"At Sitnasuak we believe in teamwork," concludes Robbie. "My goal is more input, more involvement. That way everyone feels a part of the action."

In addition to Robbie, the officers of the Sitnasuak team are Clara Langton, 1st Vice President; Danny Karmun, Sr., 2nd Vice President; Richard Foster, Secretary; and Blanche Walters, Treasurer.



BUSINESS BOOMS AT BONANZA—Violet Tucker, Manager Richard Miller, Wink Gray, Dee Adsuna, and Willis Pate run the store at Sitnasuak's busy gas station.



ROOM FOR EVERYONE—Sitnasuak's 26 unit apartment building at 5th and I streets in Nome.



YOU NAME IT, WE HAVE IT—Sitnasuak's "The Country Store" has a wide selection of home furnishings and construction materials.

WHERE ARE YOU? BSNC NEEDS CURRENT ADDRESSES FOR THE FOLLOWING STOCKHOLDERS:

Sheila Roy Ablooglook	Dagnan Thomas Kunnuk
Charles Achayok, Jr.	William John Kunnuk
Martha Adams	Mabel Ann Kunuluk
George Alurac	Ryan Marshall Lant
Joe Alurac	Lorrain Lupson
Robert Alurac	Randy Scott Martin Jr.
Susie Patricia Anderson	Irene Ann Martin
Mesongie Anarok Atkinson	Robert Mayokok
Frank Yumic Atluk	Claudia T. Mayokok
Doris Auliye	Ronald McGuire
Eva A. Bardson	Alison June McKay
Jones Tocktoo Barr Sr.	Crystal Jeanne McKay
Howard Roland Basham Jr.	Gertrude Miller
Ebba Arlene Beaver	Richard Stanley Montgomery
James Allen Beaver	Bridget Anatook Morgan
Roy Peter Beaver	David Reginald Okitkon
Craig William Bell	Deborah Ann Okitkon
Patrick Olanna Binford	Sheryl Elizabeth Oman
Helda A. Blatchford	Paralee R. Oquillock
Jack Blatchford	Freida Oquillok
Gregory James Bogojavlensky	Victor Oxereok
Bruce Malcolm Buchanan	Gerald Penetac
Mary Buck	Grace Penetac
Sherry Lee Burns	Raymond A. Penatac
Troy James Burns	Gerald Penatac
Agnes Marie Butler	Overta Myrtle Peterson
Michael Duane Charles	Stella Polaretzke
Tracy Lee Cooper	Ramona G. Prieto
Leota Ann Corso	Christopher Mark Rich
Edward Michael Cowger	Anna Agnes Riley
Bobbi Ann Craun	Alden Roberts
Kate Dorothy Craun	Genevieve Bertha Rock
Viola M. Desarro	Gregg Calvin Rock
Frances A. Dirks	Vernon C. Rock
Manon Ruth Eakon	Gladys K. Rogers
Kay Virginia Ferguson	William Charles Ryan
Lorelle Bruno Fierro	Margaret Rose Semaken
Collins Aldred Gonangnan I	Michael Rodney Simon
Myles Gonangnan II	Ann Marie Ahkolik Smith
Manion Gonangnan	Margaret Agatha Snowball
Jacob Ronald Hanaka	Davis Aseteak Sockpick
Mary Hans-n	Gary Martin Sockpick
Richard Edmond Hudson	Roy Sockpick
Victoris Margaret Hudson	Thomas Anthony Sockpick
Edna Gloria Hull	Cynthia Marie Steckdaub
Louise Janel A. Ireton	Martin Eugene Steckdaub
Allen Clifford Ivanoff	Michael Ernest Steckdaub
Glenn Stewart Ivanoff Jr.	Leona Mary Strohmeier
Karl M. Ivanoff	Kathryn Irene Tookaylok
William Levy Iyatunguk	Helen E. Topkok
Francis Welson Jones	Clarence A. Traeger
Michael Andrew Jones	Mary Waghiyi
Rose Marie Jones	Meta Movae White
Gregory Lee Katchatag	Lorraine R. A. Williams
Romauld R. Katexac	Walter Dean Williams
Stanley Kenworthy	Geraldine Esther Wilson
Gerald Jean Killarzoac	Rose Arlene Young
Marjorie Koonooka	Corwin Dean Zimmerman
Vicki Lynn Kruse	Margo Ann Zimmerman
Etta Lucy Kugzruk	Patricia Sue Zimmerman
Burl Matthew Nashoalook	
Thomas Keelick Octuk Jr.	

News from Shishmaref

By Edgar Ningeulook, Director, Social Services; Shishmaref

City of Shishmaref was appropriated funds for an entitlement of \$535.00 for each person residing within the boundaries of the municipality. The State Municipal Aid Grant funds are to be used for capital projects and/or Social Services at the discretion of the municipality.

Under this program Shishmaref decided to establish their Social Services within the City Department. Three positions were budgeted for three years in conjunction with supplies and equipment. These positions are Social Services Director, Alcohol and Drug Abuse Program Coordinator, and an Elderly and Handicapped Assistance "Handyman".

The program began their first day of operation on June 24, 1982. Shishmaref was the first second class City in the region to start Social Services. It is hoped that more villages in the region will start Social Services in their municipalities.

Edgar Ningeulook, Director of Social Services is responsible to coordinate Social Services, Alcohol and Drug Abuse Program Program and Elderly and Handicap-

ed Assistance Program in a manner which benefits everyone locally. The director also has to seek funding for various programs with other agencies in carrying out Social Services programs.

Secondly, Maggie Krier, Alcohol and Drug Abuse Program Coordinator has the responsibility in seeking funds for Alcohol and Drug Abuse programs with various agencies in carrying out the program. Programwise, the A&DA Coordinator has been showing alcohol-related movies in the community hall and at the church.

In November 1982, we held a carving workshop sponsored by a \$2,500 grant from Alaska State Council on the Arts. We also have several people in town interested in participating in one-to-one apprenticeships through another type of grant from the Alaska State Council on the Arts.

Also, we have a subscription to a magazine and a newsletter that deal with alcohol topics. We have also received a sample alcohol program called "Here's Looking At You" which is geared for classroom use and we hope it will be taught to students grades 1-12.

Another project that has been discussed as a possible prevention project is a workshop building in

Shishmaref that could be used as a carving and sewing center with additional smaller areas for a small museum and a non-profit shop to sell the artwork of carvers and sewers. What is needed now is possible funding for the actual building materials.

In addition, Warren Ningealook, our Elderly and Handicapped Assistance Program "Handyman" is busy in assisting the Elderly and Handicapped in doing every day chores which they may not be able to do using a ATC Honda and sno-machine. Chores include hauling water, ice, hauling/pumping fuel oil, hauling garbage, shopping, shoveling snow from entrances, etc.

By the way

AGLUKTUK is your newspaper. If you would like to write a story about something that is happening in your village, an interesting person or a wedding, graduation, etc., we will print it in AGLUKTUK. Please send any stories or black and white photos to AGLUKTUK, BSNC, Box 1008 Nome, Alaska 99762 or call 443-5252. We welcome any ideas which you may have which will improve the paper.