

BERING STRAITS AGLUKTUK

volume 2 number 1

published by bering straits native corporation

dec. edition

3 unlisted villages determined eligible

Council

King Island

Solomon

regional fishing project

haycock ineligible

YOUR
\$171.00

Presidents
Village Native Corporations
BSNC Regional Villages

Dear Presidents:

The Executive Board has authorized me to proceed with working up the Preliminary Planning on the Commercial Fisheries Project.

To begin with, the General idea would be to have an operation like a fishing co-op and involving the villages from Nome - eastward including Nome, King Island, Solomon, Council, White Mountain, Golovin, Elim, Koyuk, Shaktoolik, Unalakleet, Stebbins, and St. Michael. There should be at least three or four "pick-up points" which would have a large freezer capable of storing frozen fish, meat, or other products. Two existing freezers that could be utilized are at Golovin and Unalakleet and I would imagine two additional points could be Nome and perhaps Koyuk, but planning would have to be done on site selection. A major Japanese Corporation who has an interest in fish and other products would come by and pick up whatever products were for sale at a price much higher than you are now receiving. An example of price is that one Japanese firm paid 72¢ a pound for gutted chum (dog salmon) and \$2.10 a pound for the eggs at Kotzebue this past fishing season. This compares very well with the 14-15¢ a pound that you have received in the past.

Two further points that should be brought out are that my plan would be for:

1. The freezer plants to be owned and operated by the Village Corporation where they are located.

2. The Regional Corporation would require a certain expense as a profit for administering the contract and coordinating the entire operation with the Japanese.

Although these plans are very preliminary and depend on the village being willing to be a part of the group, I have every intention to bring this plan into being by next summer pending Board action by both the Village and the Regional Corporations. I will be visiting all of the villages mentioned before the end of December but hopefully by the end of November to discuss these plans.

Director's
Meeting

The Annual Meeting;

BSNC Board Election;

Stock Registry System;

BSNC By Laws;

Money Distributions
10% & 45%; &

Investments will be discussed at the BSNC Board of Directors meeting December 18th. Look for next months issue on the outcome of the meeting.

There is no reason that we could not include other villages or sell other products such as meat or berries once the freezer plants are in operation and a plan to transport bulk shipments by boat or air is implemented. The Regional Corporation can establish the market for the product and negotiate to see that you get a good price providing that we have bulk and/or a steady, dependable supply.

I will call or send a message to each village to arrange for a general meeting with the Village Corporation Board, the Village stockholders from the village.

Sincerely,

Gary T. Longley, Sr.
Executive Vice-President

\$171.00 will be turned over to each stockholder of the Bering Straits Native Corporation. This money will go to the heads of households, or custodians. Before receiving the money each custodian will need to fill out a paper stating that he or she will not spend the money for the children in a manner that does not benefit that child. The money for the child may be spent on food or clothing, or part of it can be given to the child to spend.

This money will be mailed to the stockholders in January 1974.

On the inside:

Sitnasuak.....2
Land Selection.....3
Money.....4
Reserves.....5
Projects.....6
Staff.....7
Training.....8

BERING STRAITS AGLUKTUK

editor

irene anderson

typist

I. DOUGLAS

Dec issue

bsnc box 1008 nome, alaska

editorial

Future Regional Manpower Needs have been identified by a book "Land Claims and Native Manpower", by the Alaska Native Foundation and the University of Alaska.

The book pointed out useful information concerning present and future regional workloads, consisting of mainly of the following:

● General Administrative and Planning

Most Regional Corporations have hired an Executive Vice President and an assistant to carry out the Administrative duties of the Corporation. Mr. Longley serves as the Executive Vice President, and Thomas Drake as Vice President in the Administrative level of this region.

● Investment of Funds

There are three types of investments which the Corporations may consider, as pointed out in the Nathan Report. 1) direct investment such as real estate. 2) portfolio investments such as stock and bonds, and 3) business enterprise.

The investments are important to each stockholder, as they will share in the profits. Mr. Longley has looked into investment possibilities as stated in the Preliminary Project Report. The Corporation is bringing up the portfolio investment.

● Land Resource Management

Land is one of the major parts of the "Act." The booklet stated that by 1978 the regional corporations may be viewed as large land owners in the business of land management and resource development. Richard Atuk is the BSNC Assistant Vice President for Land Use Planning. He is in charge of the land recordkeeping system, the monitoring of the land selection and Bureau of Land Management. The regions will also need a surveying team and may subcontract with BLM to do the surveying as stated under the "Act."

cont. on page 3



Staff:

Jerry Trigg

Lydia Kugzruk

Albert Lee

I urge the stockholders to stop in or write and learn further of Sitnasuak. I would also be interested in your ideas on the management of Sitnasuak's land and monies.

by jerry trigg

Q. What is the Sitnasuak Native Corporation?
A. A profit making corporation.

Q. Who owns the corporation?
A. Those enrolled to Nome under the Alaska Native Claims Settlement Act (9L 92-203). You are a stock holder owning 100 shares of stock. Keep in mind that these cannot be sold for a period of twenty years.

Q. What are its functions?
A. It has many functions. Basically, it will manage money and lands the stockholders and village are entitled to under the claims act.

Q. How much money is it to receive?
A. It is not known for certain yet. However, it will be between 10 and 20 million dollars.

Q. How much land will it receive?
A. Sitnasuak is entitled to 161,280 acres.

Q. How will the corporation manage the land and money?
A. The Articles of Incorporation indicate the corporation will be directed by a 10 person Board of Directors. These Directors are to be elected by the stockholders.

Q. When will the money start coming in?
A. The Regional Corporation should receive the first funding on or after December 18, 1973. The money known as the 10% individual money will be distributed shortly afterwards. The village money will not go to the villages until a suitable plan for its use is approved by the Regional Corporation.

The above questions are the most frequently asked. I hope you find the answers helpful. Below, I will make further comments to further inform you of your Corporation.

There are approximately 2,500 stock holders. The exact figure will be announced soon. You will be receiving your stock certificates in the near future.

The initial Board of Directors Are: Larry Davis, President; Myrtle Johnson, Secretary; Blanche Walters, Treasurer; Jerome Trigg, Robert Joe, Francis Longley, Richard Atuk and Chuck Fagerstrom, Board members. Until recently, Jerome Trigg was the President. Al Lee and I, Gerald Trigg, were Board members but resigned to assume positions on Sitnasuak's staff. Lydia Kugzruk is the Staff Secretary. This initial Board will be replaced by a Board to be elected in a general election soon after we are identified by BIA as certified stockholders.

from page 2

• Accounting

Accounting is another major part of the "Act." This region will receive \$12,000,000 December 17th. Investments will be necessary with the Board of Directors making major investments decisions. JoAnn Kost, the Acting Controller has the primary responsibility of accounting for the regional and village funds.

In the January issue I will point out regional responsibilities and needs in Legal Council, Village Corporation Liaison, Lobbying, Public Relations, Training and Development Planning. Also the Manpower needs in the regional associations and Village Corporations.

GUIDELINES for VILLAGE SELECTION

5th
of a series

by MORRIS KUGZRUK

After returning from several village trips in which I have had the opportunity to see some actual initial land selections being made by the Village Corporations, I was overwhelmed to see how serious the Village Corporation members undertook their task and what resources and potential resources they have considered before completion of their initial selection.

The following Village Corporations have made their initial selection as of December 11, 1973:

Shishmaref, Wales, Brevig Mission, Mary's Igloo, King Island, Solomon, Council, White Mountain, Koyuk, Shaktoolik, Unalakleet, Stebbins, and St. Michael.

Some of the resources or potential resources considered by some of the above villages are as follows:

Fishing, hunting, trapping, minerals, oil and gas potentials, transportation, fuel (wood), port facilities, geothermal potential, berries, water source, and recreation.

Three of the above villages have also taken into consideration their possible new village location sites in the event that they decide to move to another location due to various reasons.

The initial selections made should be made available to all stockholders of the Village Corporation for their review and comments.

Keep in mind that the selection deadline is December 18, 1974. This means that the Village Corporations have about a year in which to make changes.

BSNC has been making studies of the mineral potential and geology of each village withdrawal area and it is expected that either Richard Atuk or Diane Tweet may be traveling to the villages in the future to inform them of what is currently known.

Village selection application forms will have to be filled out before the deadline and written legal descriptions of land selected is a requirement.

I suggest that each Village Corporation study the land that they have selected and write to BSNC about what resources are available within their selections and the location of each. By doing so, each village may find a way to develop the resources upon receiving the monetary benefits.

MERRY CHRISTMAS and a HAPPY NEW YEAR.



**FROM
THE
STAFF
AT
BSNC**

To wish you every
happiness at Christmas
and in the New Year

RESERVATION ELECTIONS

st. lawerance

By Harold Anderson

elim

By Diane Tweet

On Tuesday, November 15, 1973, Elim residents and 35 absentee voters voted overwhelmingly to aquire title to 316,000 acres of the Elim Reservation. The election was conducted by Alaska Legal Service with observers from the Bureau of Indian Affair and the Bering Straits Native Corporation. The purpose of the election was to determine whether Elim would opt for surface and subsurface ti tle of their former reservation or would aquire land under the Alaska Native Claims Settlement Act. with the latter option Elim would receive surface title to 115,000 acres plus money benefits from the "Act." These money

benefits would include individual shares, and dividends from BSNC. The polls were open from 9 am to 9 .pm on Tuesday and ballots were cast by 157 Elim residents and 35 absentee voters . The official tabulation was 192 1/5 votes for fee title of the former reservation lands and 2 1/5 for the "Act." (The 1/5 votes resulted from heirs vot- ing shares from deceased stockholders.) Representing Alaska Legal Services at the election were George Edwards and Joe Curran; representing BIA and BSNC as obser- vers were Harold Anderson and Dian reet re- spectively. We extend ur hearty congradulations to Elim for their united decis- ion

St. Lawrence Island was established by Ex- ecutive Order of January 7, 1973, revoked by Section 19, of the Alaska Native Claims Settle- ment Act of December 18, 1971 (85 Stat. 688), with the right to elect and acquire title to the surface and subsurface estates of the former reserve, by section 19 (b) of said Act. The incorporated village of Savoonga and Gambell, St. Lawrence Island, held their el- ection on November 20, 1973, and voted by an overwhelming majority to acquire title to all lands, surface and subsurface, contained in the former reserve. Alaska Legal Services Corporation, repre- sented the two village corporations and coun- seled them as to their possibilities and statu- s under the two options available. They al- so advised on election procedures, to comply with and insure a fair and democratic elect- ion. The Bering Straits Native Corporation also had meetings with the village communities to advise them of benefits & responsibilities if they elected to accept provisions of ANCSA of December 18, 1971. During polling hours and tabulation, it was planned to have a team of observers at each village consisting of a representative of the Alaska Legal Services, Bering Straits Native Corporation, and Bureau of Indian Affairs. Polls were open from 8 a.m. to 8 p.m., with absentee ballots mailed almost 30 days in ad- vance, on October 24, 1973.

money distributions

The Village Corpora- tions are groups o f people enrolled to a Village. The Corpora- tion in a Village is directed by a Board of Directors. These Corporation shall re- ceive monies under the ACT. The ACT al- so stated that t he Village will not re- ceive the monies go- ing to them until a budget proposal for investments is app- roved by the Board of Directors by the Reg- ional Corporation. Below is a tabula- tion of monies allot- ed to the Village in the Bering Straits Native Corporation.

Enrollment Figures		1972	1973	1974	1975	1976	1977	1978
133	Brevig Mission	\$ 8,113	\$ 39,235	\$ 54,663	\$ 54,530	\$ 65,037	\$ 74,480	\$ 73,017
69	Council	4,209	20,355	28,359	28,290	33,741	38,640	37,881
169	Golovin	10,309	49,855	69,459	69,290	82,641	94,640	92,781
97	Inalik	5,917	28,615	39,867	39,770	47,433	54,320	53,253
188	King Island	11,468	55,460	77,268	77,080	91,932	105,280	103,212
188	Koyuk	11,468	55,460	77,268	77,080	91,932	105,280	103,212
102	Mary's Igloo	6,222	30,090	41,922	41,820	49,878	57,120	55,998
2,095	Nome	127,795	618,025	861,045	858,950	1,024,455	1,173,200	1,150,155
207	Shaktoolik	12,627	61,065	85,077	84,870	101,223	115,920	113,643
312	Shishmaref	19,032	92,040	128,232	127,920	152,568	174,720	171,288
40	Solomon	2,440	11,800	16,440	16,400	19,560	22,400	21,960
260	St. Michael	15,860	76,700	106,860	106,600	127,140	145,600	142,740
270	Stebbins	16,470	79,650	110,970	110,700	132,030	151,200	148,230
276	Teller	16,836	81,420	113,436	113,160	134,964	154,560	151,524
847	Unalakleet	51,667	249,865	348,117	347,270	414,183	474,320	465,003
163	Wales	9,943	48,085	66,993	66,830	79,707	91,280	89,487
210	White Mountain	12,810	61,950	86,310	86,100	102,690	117,600	115,290
Totals		\$343,186	\$1,659,670	\$2,312,286	\$2,306,660	\$2,751,114	\$3,150,560	\$3,088,674

island

Harold Anderson

B I A Reality



Savoonga: Issuance of ballots, checking for voter eligibility, obtaining affidavits for minor representation, was monitored by local non-native ministers, Alice Green, Presbyterian Church and Randy Barlow of the 7th Day Adventist Church. Both are well acquainted with the community and qualified to check eligibility with the enrollment printout of Sept. 24, 1973. They also tabulated ballots after polls were closed.

Gambell: Issuance of ballots, checking for voter eligibility, obtaining affidavits for minors representation, was monitored by three local members of the community. Tabulation of ballots was conducted by the two local non-native ministers of the Presbyterian and 7th Day Adventist Church.

Election Observers:

Mariclaire Hale - Alaska Legal Services Corp.
Bob Bundy - Alaska Legal Services Corporation
Vernon Kugzruk - Bering Straits Native Corp.
Cliff Weyiouanna - Bering Straits Native Corp.
Harold Anderson - Bureau of Indian Affairs-Nome
Basic Statistics: From the Enrollment printout
of September 24, 1973:

	<u>Savoonga</u>	<u>Gambell</u>	<u>Total</u>
Enrolled:	425	456	881
Over 18:	296	295	591
Island Resident:	360	350	710
Non-Resident:	65	106	171

Election results: Were tabulated, based on 100 shares of stock per enrollee.

92% of outstanding shares were voted.

	Savoonga	Gambell	Total
For the Reserve:	40,800	37,525	78,325
For the Act;	100	2,600	2,700
Total shares outstanding	43,100	45,200	88,300

Balloting: Was conducted at Savoonga and Gambell, in their National Guard Armories. Weather conditions did not contribute to the occasion. Observer team arrived in Savoonga the afternoon before the election, and the team scheduled for Gambell was not able to continue to their destination until approximately 2:30 pm. on the day of the election in Gambell. Because of bad weather conditions, the BIA representative had opportunity to observe approximately half of the balloting hours at both Savoonga and Gambell. Atmosphere at both polling places was the typical village informally, but with high degree of attention to procedure for a fair and democratic election. Alaska Legal Service representatives were present to advise and rule on the few technicalities asked by monitors of the election. Voters in this election appear to have had adequate information and advice in open community meetings. Procedure and conduct of the election was reasonable and businesslike, and with a 92% voter response- a clear decision of the people.

Dated 28th day of November, 1973
None, Alaska

45%

village

45%

regional

10%

individual

1979	1980	1981	1982	1983	1984	1985	TOTAL
\$ 73,017	\$ 73,017	\$ 73,017	\$ 73,017	\$ 47,481	\$ 47,481	\$ 37,639	\$ 793,744
37,881	37,881	37,881	37,881	24,633	24,633	19,527	411,792
92,781	92,781	92,781	92,781	60,333	60,333	47,827	1,008,592
53,253	53,253	53,253	53,253	34,629	34,629	27,451	578,896
103,212	103,212	103,212	103,212	67,116	67,116	53,204	1,121,984
103,212	103,212	103,212	103,212	67,116	67,116	53,204	1,121,984
55,998	55,998	55,998	55,998	36,414	36,414	28,866	608,736
1,150,155	1,150,155	1,150,155	1,150,155	747,915	747,915	592,855	12,502,930
113,643	113,643	113,643	113,643	73,899	73,899	58,581	1,235,376
171,288	171,288	171,288	171,288	111,384	111,384	88,296	1,862,016
21,960	21,960	21,960	21,960	14,280	14,280	11,320	238,720
142,740	142,740	142,740	142,740	92,820	92,820	73,580	1,551,680
148,230	148,230	148,230	148,230	96,390	96,390	76,410	1,611,360
151,524	151,524	151,524	151,524	98,532	98,532	78,108	1,647,168
465,003	465,003	465,003	465,003	302,379	302,379	239,701	5,054,896
89,487	89,487	89,487	89,487	58,191	58,191	46,129	972,784
115,290	115,290	115,290	115,290	74,970	74,970	59,430	1,253,280

\$3,088,674 \$3,088,674 \$3,088,674 \$3,088,674 \$2,008,482 \$2,008,482 \$1,592,128 \$33,575,938

P
R
E
L
I
M
I
N
A
R
Y

P
R
O
J
E
C
T

R
E
P
O
R
T

TO: Jerome Trigg, President
FROM: Gary T. Longley, Sr.
Executive Vice-President
SUBJECT: Preliminary Project Report
DATE: October 29, 1973

I. INVESTMENT MANAGEMENT PROGRAM:

- A. Suggest serious consideration be given to the attached Alaska Federation of Natives proposed Region-Village Investment Management Program.
- B. Further suggest that all short term and limited length investments remain with Alaska National Bank of Fairbanks for an interim period and that a long range plan of investment management be studied and implemented.

II. RECOMMENDED LOCAL INVESTMENTS:

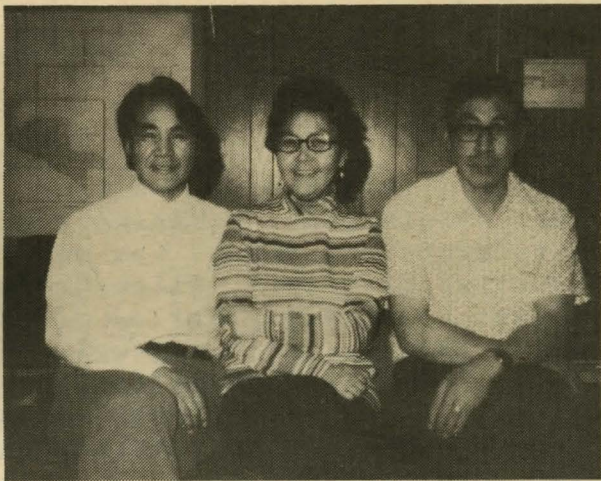
I would recommend that serious consideration and follow-up planning be made with the idea that the following projects are some that we should invest in or consider for investment purposes:

- A. LOST RIVER OPERATION:
 - 1. Funding or partnership in port facilities
 - 2. Leasing of mining lands
 - 3. Partnership in ore ships
- B. CENTRAL CONSTRUCTION COMPANY AFFILIATION:
 - 1. Interim Affiliation
 - 2. Full partnership for local bids
 - 3. Full partnership for Alaska-wide bids
 - 4. Ownership of Company
- C. COMMERCIAL FISHING:
 - 1. Management of Co-op type venture with villages and fisherman as prime contractors
 - 2. Operation of chain as prime contractor
 - 3. Serve as coordinator and marketing agent
- D. SEWARD PENINSULA MINING, LTD.:
 - 1. Mining Company to enable us to lease mining ground to mining companies which is not otherwise available to the Regional Corporation. (Already incorporated with Jerome Trigg, Charles Fagerstrom, and Gary T. Longley, Sr. as Board of Directors.)
 - 2. Staking of land available to the general public after village selection is completed.

III. PRELIMINARY PLANNING AND FEASIBILITY STUDY:

- A. Geothermal energy (Pilgrim, Elm, Serpentine, Fish River)
- B. Tourism (Regional and Village)
- C. ANICA (Grocery Chain concept)
- D. Wholesale Distributorships (any product)
- E. Office Building (Historical Preservation, Bonded Liquor Warehouse, Restaurant, Bar, Shops-Tourism Oriented, Airline Offices, NSHC, Kawerak, Post Office, BIA, etc.)
- F. Culture Center (Native and gold mining)
- G. Regional Training Center (Human Resource Development possibly with U of A or at Unalakleet or Beltz)
- H. MESBIC (Minority Enterprise Small Business Investment Corporation)

village affairs



Vernon Kugzruk, Lois Larsen, & Clifford Weyiouanna

Clifford Weyiouanna has been promoted to Assistant Vice President, Village Affairs, a vacancy left when Tim Towarak moved to Unalakleet to work with the Unalakleet Native Corporation. Vernon Kugzruk has also been promoted to fill Mr. Weyiouanna's previous position as Assistant/Village Affairs. The Village affairs staff will continue in the liaison work between the region and the villages. Important to the staff and the villages now, is the investment programs which the villages will become involved in.

attention craftsmen

The Cook Inlet Native Association has started a sales outlet for native artists and urges your support of the shop to make it a success. Since we are native owned and operated and completely non-profit, we can afford to support the native artists and not become involved with keystone practices to support ourselves. Send your items into the shop and allow us to handle and market the goods. We would like to see the shop increase its consigned inventory to include as varied a selection of Alaskan Native art as possible.

If you have any questions you may address them to:
Jim Scheppert
CINA ARTS & CRAFTS
3350 Commercial Drive
Anchorage, Alaska
99501

you will be given a prompt reply.
Support native owned and operated industry.

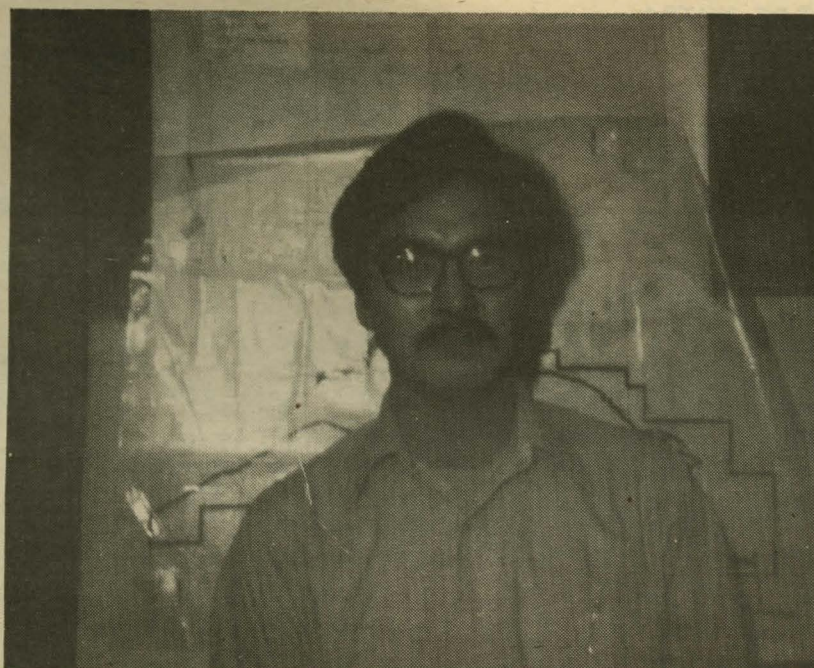
POSITION DESCRIPTIONS



Isabelle Douglas
CLERK TYPIST

REPRESENTATIVE DUTIES AND RESPONSIBILITIES

- 1) Assists in the development and correct use of the Stock Registry System.
- 2) Types a variety of assigned work, i.e., with accuracy and correct format.
- 3) Types final draft of copy of the Corporation newspaper, and assists in preparing the layout.
- 4) Files, makes copies, and mails material as assigned.
- 5) Maintains the correct mailing address list for the Region.
- 6) Is available for Travel under direction of the Executive Vice-President.
- 7) Other duties as assigned.



land
use
planning

Thomas Punguk has filled the Land Clerk position. He has come from Golovin where he was employed as the Golovin Policeman. Mr. Punguk was on the Golovin City Council, as

Secretary-Treasurer. His family consists of a wife, the former Katherine Oseuk of Gambell. A baby is expected this month.



Irene Anderson
EXECUTIVE SECRETARY

REPRESENTATIVE DUTIES AND RESPONSIBILITIES

The function of the Executive Secretary is to supervise a staff which furnishes advice, administrative support and staff assistance to the Executive Vice-President of the Bering Straits Native Corporation primarily as refers to Public Law 92-203 Alaska Native Claims Act.

- 1) Receives and reads incoming correspondence for the Executive Vice-President. Routes correspondence to appropriate staff personnel for action. Maintains a follow-up system to insure that replies are made promptly including those replies that require the Executive Vice-President's attention. Reviews documents for supervisor's signature for format, clarity, sentence structure, grammatical accuracy, etc.
- 2) Assists the Executive Vice-President in the preparation of reports, speeches and correspondence primarily by assembling material from the files on specific subjects and compiling statistical data for utilization.
- 3) Sets up and maintains correspondence and subject matter files necessary to supervisor's activities. Responsible for the maintenance of office management.
- 4) Is responsible for efficient functioning of the office during the absence of the Executive Vice-President and assists the Assistant Executive Vice-President or other designee in ensuring continuity of office management.
- 5) Serves as resource person for Assistant Executive Vice-President's Secretary.
- 6) Serves as Editor of the Corporation newspaper "Bering Straits Agluktuk" and is fully responsible for ensuring complete accuracy of items placed in the newspaper. Must coordinate all time elements and editing with each office chief to ensure greatest degree of accuracy and a standard time for publication of each article and the newspaper in general. Ensures that Copyright usage of our material is properly maintained.
- 7) Reviews and studies printed material on generalized subjects to determine possibility of application to corporation participation and feasibility of further review by the Executive Vice-President.
Compiles facts, figures and material on specialized projects required by the Executive Vice-President for further presentation to the Board of Directors.
Assists Executive Vice-President in implementation of approved projects until control is maintained at which point the project is released to the designated project manager.
- 8) Other duties as assigned.

Village Affairs Training

The Village Affairs Department conducted a week long seminar November 5th through the 9th. There were 35 people from the villages within the region that attended, which made the week very interesting and short.

The first day each village representative gave an up-to-date report on their villages as to what has been done and what the village Board of Directors had planned in setting up their Village Corporation offices. Some villages indicated that they had hired Executive Directors & secretaries, which would provide better communication between the village and the Regional Office.

Some subjects that were covered with the group, were stockholders rights, responsibilities, wills, etc. Once the enrollment is completed December 18, 1973 the stockholders will be established which will give each village a figure that will indicate the correct money total and how much land the villages will receive. The stock holders will have a great responsibility on how they will invest the 45% the village will receive. We must keep in mind that the money that will be received will have to make profit that will expand from this generation to many generations in the future.

Joanne Harhut, supervisor of the Alaska State Election Office spent an afternoon explaining the procedures the city government must follow in accordance with state law and city ordinances on elections that each city must follow.

A brief explanation was made on cumulative voting that village stockholders will use in electing village Board of Directors and Regional Board of Directors. Although people may not have an understanding of this type of voting, further explanation of cumulative voting will be made to the village stockholders.

Larry Stewart, from the Internal Revenue Service spent an afternoon explaining the procedures used in reporting Federal taxes. We realize that the money coming from the Alaska Native Fund will be tax free, but once that money is invested and profit is shown, this profit will be subject to common State and Federal tax. For those villages that have employees, these employees must pay regular payroll taxes.

On the last day, we had a panel discussion, which gave some villages ideas on how other villages were planning to invest their money. Although these were not definite plans, it have those villages present at the meeting, some idea of what is being talked about in some villages. We would like to encourage the village people to work as close as they can with the village Board of Directors, remembering that some of these ideas presented to the Board of Directors could become a reality after studies on investing monies are made.

The people attending the seminar did take printed information back and it could be very helpful for those people in the village to read and study the information they did take back.

The following people attending the seminar were:

SOLOMON:

Bobby Curran

TELLER:

Edward Keelick
Charles Lee

UNALAKLEET:

Carol Lockwood
Fred Katchatag

STEBBINS:

John Martin
Morris Coffey

WALES:

Jonah Tokienna
Norman Ongtawasruk

WHITE MOUNTAIN:

Tom Brown, Sr.
Alfred Lincoln

BREVIG MISSION:

Elmer Olanna
Leonard Olanna
Reuben Adam

COUNCIL:

Leona Arrington

ELIM:

Harry Daniels, Jr.
Wilfred Murray

GAMBELL:

Jerry Tungian
Melvin Walunga

GOLOVIN:

Ralph Willoya
Alfred Moses, Jr.

IGLOO:

John Komok
Joe Garnie

KING ISLAND:

Raymond Penetac

KOYUK:

Frank Kavairlook
Henry Kavairlook

NOME:

Gerald Trigg

ST. MICHAEL:

Clyde Acoman
Andrew Otten

SAVOONGA:

Paul Rookok
Earl Tumbloo

SHAKTOOLIK:

Tony Sagoonick
Franklin Paniptchuk

SHISHMAREF:

Henry Ahgupuk
Morris Kiyutelluk



BERING STRAITS NATIVE CORPORATION
P.O. BOX 1008
NOME, ALASKA 99762

ADDRESS CORRECTION REQUESTED

Bulk Rate U.S. Postage
PAID
Nome, Alaska 99762
PERMIT No. 12