



# Wales Potential Storm Impacts

## Coastal Flood **Warning**

### **IMPACTS:**

- Buildings near the Naval Station Rd bridge including the post office will flood
- High water in village creek will approach the winter trail to Tin City
- Water will run high up on the beach and may inundate the fuel storage tanks

### **What to Expect:**

Water levels: 5-7 feet above the normal high tide line.

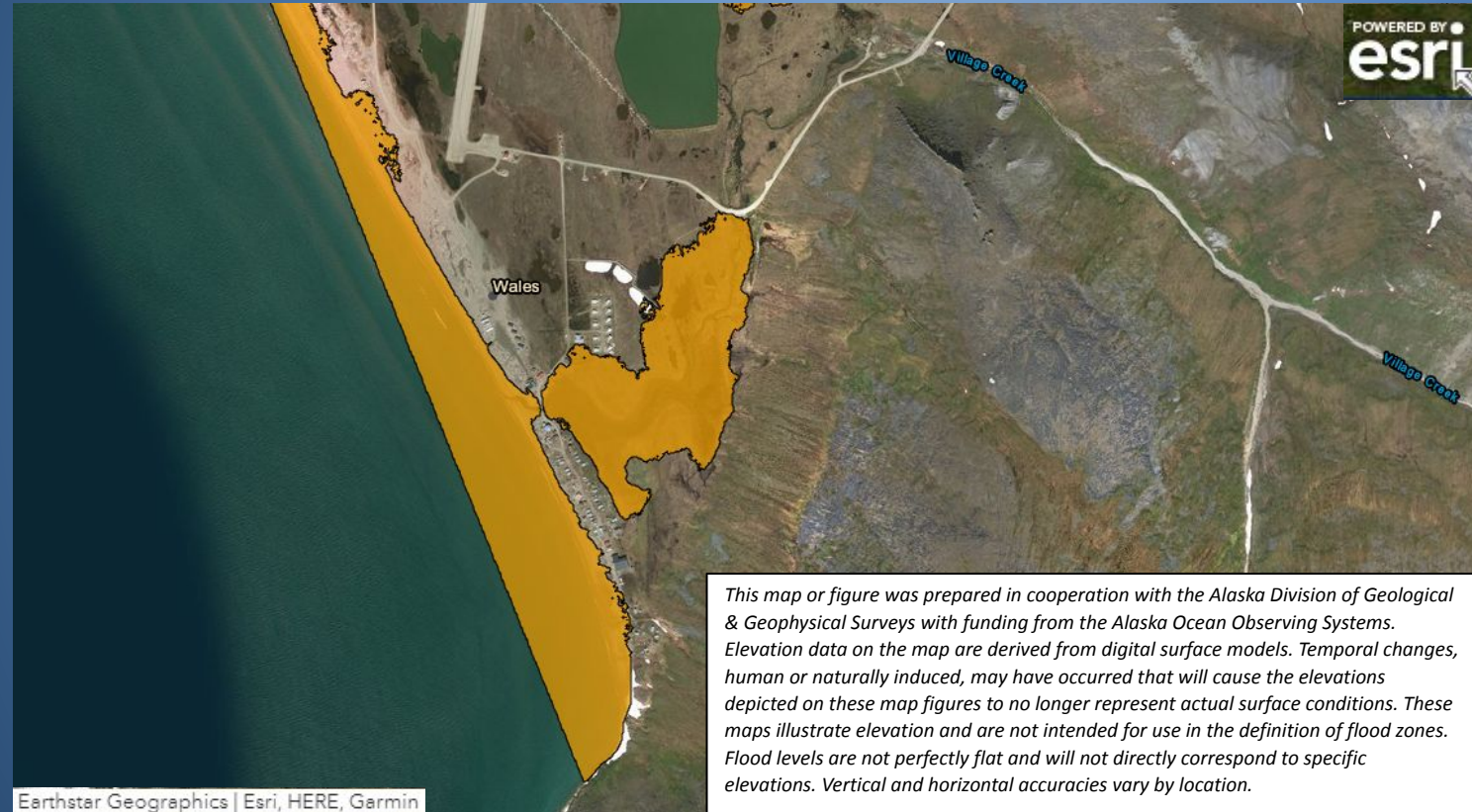
Timing: The highest water levels will occur around Friday night and again Saturday afternoon.

Winds: South winds 50 to 60 MPH with gusts up to 90 MPH

- Significant beach erosion is likely.



# Wales Potential Storm Impacts



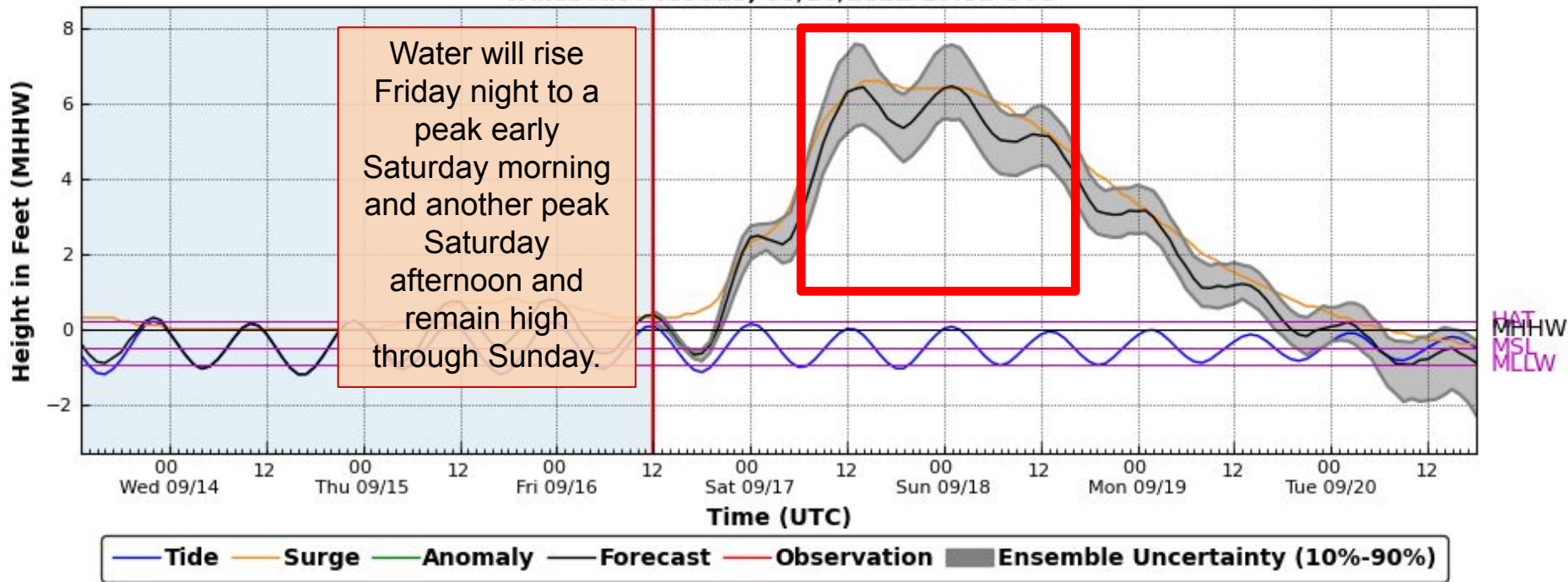
*This map or figure was prepared in cooperation with the Alaska Division of Geological & Geophysical Surveys with funding from the Alaska Ocean Observing Systems. Elevation data on the map are derived from digital surface models. Temporal changes, human or naturally induced, may have occurred that will cause the elevations depicted on these map figures to no longer represent actual surface conditions. These maps illustrate elevation and are not intended for use in the definition of flood zones. Flood levels are not perfectly flat and will not directly correspond to specific elevations. Vertical and horizontal accuracies vary by location.*

Orange is the anticipated area of inundation for water levels of 7ft above the normal highest tide line. This does not account for wave run-up.



# Wales Potential Storm Impacts

Wales AK 9469515, 09/16/2022 18:03 UTC





# Wales Potential Storm Impacts

See the NWS webpage for the latest forecasts  
[www.weather.gov/fairbanks](http://www.weather.gov/fairbanks)

NATIONAL WEATHER SERVICE  
NATIONAL OCEANIC AND ATMOSPHERIC ADMINISTRATION

Local forecast by 7:45:00 AM on 08/02/12  
Enter location: (GO)  
Location help

News Headlines  
• Fairbanks October 2012 Climate Summary  
• Learn more about what the National Weather Service is and what we do to support you!  
• Become a Weather-Ready Nation Ambassador!

NWS Forecast Office : Fairbanks, AK  
Weather.gov • Fairbanks, AK  
Weather Forecast Office

Current Hazards | Current Conditions | Radar | Forecasts | Rivers and Lakes | Climate and Past Weather | Local Programs

Quick Zoom: Alaska Statewide | Southcentral | Fairbanks | Western | Central/Northern | Juneau/Southeast | Disable Mouse Scroll

Land Hazards  
- Warning  
- Watch  
- Advisory  
- Special Wx

Marine Hazards  
- Heavy Fog Spotty  
- Heavy Fog  
- Squalls  
- Storm Warning  
- Gale Warning  
- Gales

Hover over a zone

Cities: (GO) | Legend: (GO) | Off

marine updated Thu 10/02 11:00  
public updated Thu 10/02 11:00

Alaska IV Weather Maps | Satellite (GOES) | Satellite (GOES) | Radar | Graphical Forecast | Graphical Forecast  
Decision Support Page | Space Weather | Fire Weather | Marine | Submit a Report | Social Media

Storm and flooding observations can be submitted here. They will immediately alert a forecaster at our office in Fairbanks.

- Please contact National Weather Service 24/7 with any questions or observations:
  - Phone: (907) 458-3708
  - Email: [fairbanks.weather@noaa.gov](mailto:fairbanks.weather@noaa.gov)
  - Please take photos or video of flooded areas. This will help improve our forecasts for your community.