



Unalakleet Potential Storm Impacts

Coastal Flood Warning

IMPACTS:

- The area around the AC Store, Post Office, and the Unalakleet Lodge will likely be inundated
- The area of buildings near the bridge will likely be inundated
- Water will likely approach or flood the area near the electrical and power plant structures as well as the water treatment and pump
- Significant erosion is expected

What to Expect:

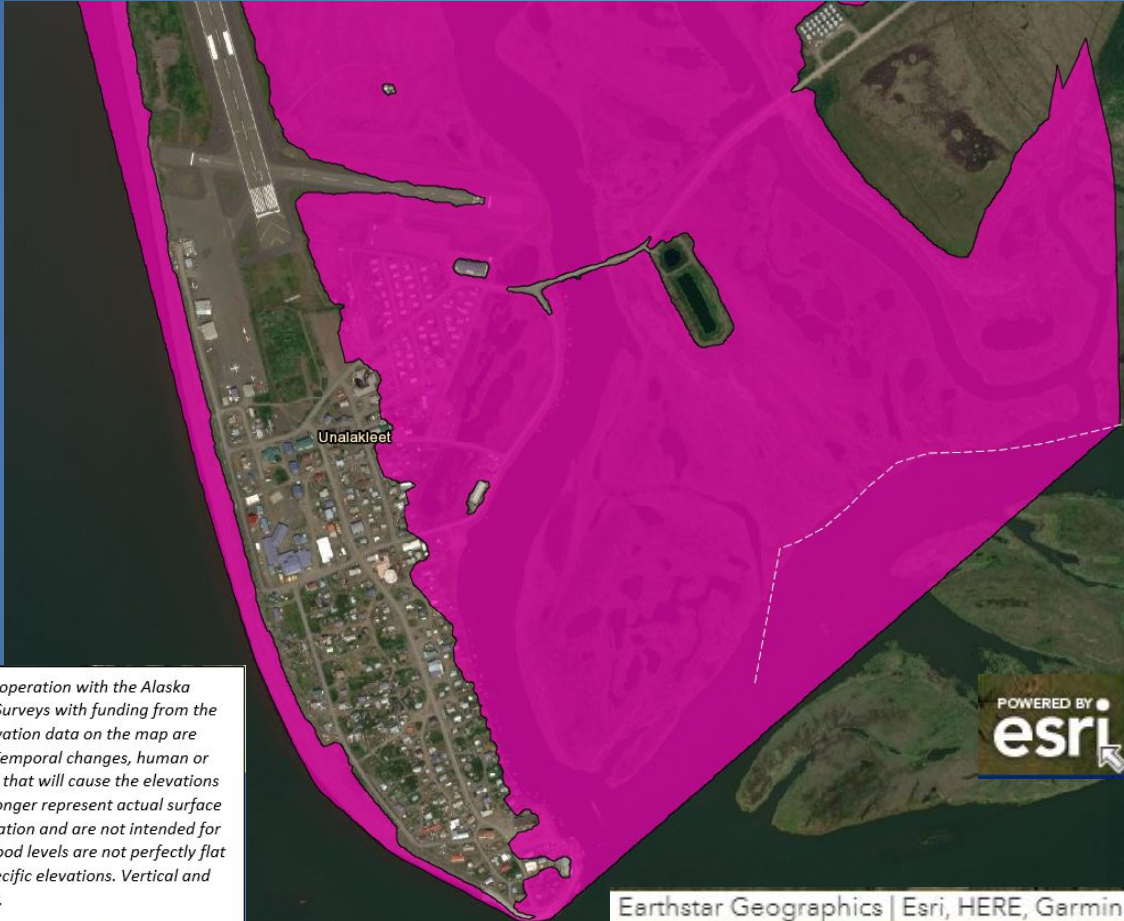
Water levels: 10-12 feet above the normal highest tide line

Timing: The highest water levels will occur on Saturday evening and night.

Winds: Southwest winds 40 to 50 mph with gusts up to 80 mph possible.



Unalakleet Potential Storm Impacts



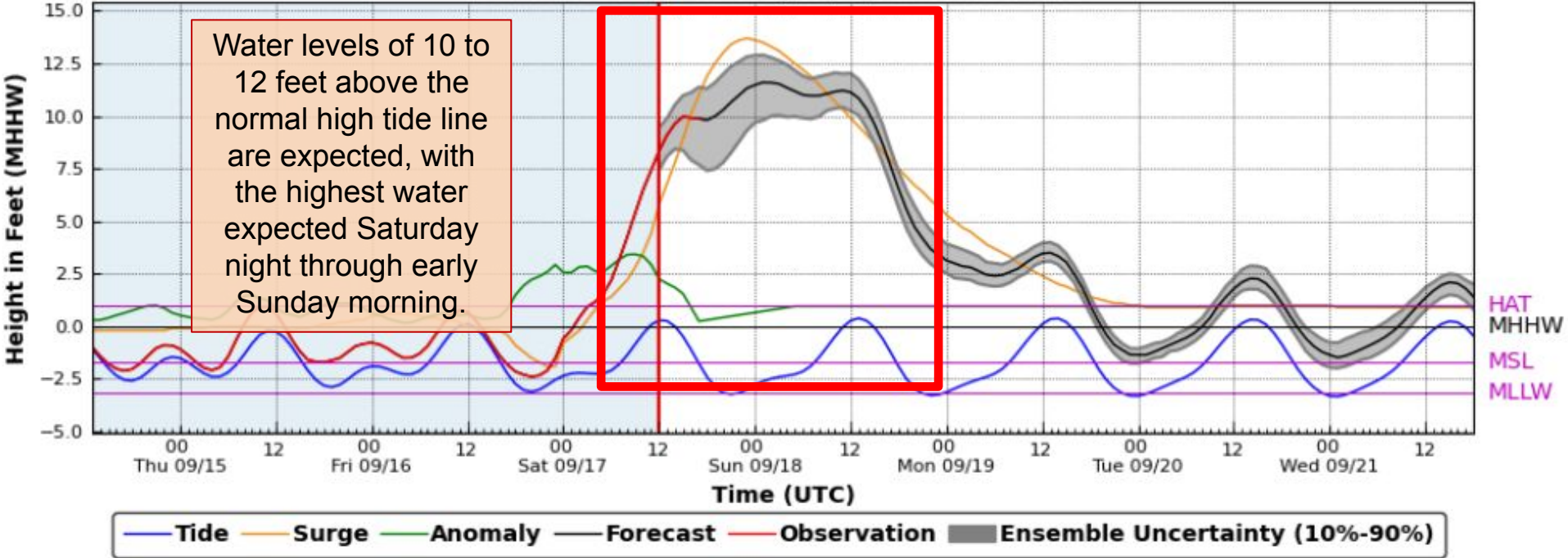
Pink is the anticipated area of inundation for water levels of 12ft above the normal highest tide line. This does not account for wave run-up.

This map or figure was prepared in cooperation with the Alaska Division of Geological & Geophysical Surveys with funding from the Alaska Ocean Observing Systems. Elevation data on the map are derived from digital surface models. Temporal changes, human or naturally induced, may have occurred that will cause the elevations depicted on these map figures to no longer represent actual surface conditions. These maps illustrate elevation and are not intended for use in the definition of flood zones. Flood levels are not perfectly flat and will not directly correspond to specific elevations. Vertical and horizontal accuracies vary by location.



Unalakleet Potential Storm Impacts

Unalakleet AK 9468333, 09/17/2022 18:03 UTC





Unalakleet Potential Storm Impacts

See the NWS webpage for the latest forecasts
www.weather.gov/fairbanks

NATIONAL WEATHER SERVICE
NATIONAL OCEANIC AND ATMOSPHERIC ADMINISTRATION

Local forecast by
7:45u APT on 08/08/2014

Enter location: [GO]
Location help

News Headlines
• Fairbanks October 2013 Climate Summary
• Learn more about what the National Weather Service is and what we do to support you!
• Become a Weather-Ready Nation Ambassador!

NWS Forecast Office : Fairbanks, AK
Weather.gov : Fairbanks, AK
Weather Forecast Office

Current Hazards | Current Conditions | Radar | Forecasts | Rivers and Lakes | Climate and Past Weather | Local Programs

Quick Zoom: Alaska Statewide | Southcentral | Fairbanks | Western | Central/Northern | Juneau/Southeast | Disable Mouse Scroll

Land Hazards
- Warning
- Watch
- Advisory
- Special Wx

Marine Hazards
- Heavy Fog Spotty
- Heavy Fog
- Squalls
- Storm Warning
- Gale Warning
- Small Craft Adv.

Hover over a zone

Cities: [GO] [OFF] Legend: [GO] [OFF]
marine updated Thu 10/08/2014 1:00
radar updated Thu 10/08/2014 1:00

Alaska IV Weather Maps | Satellite (GOES) | Satellite (GOES) | Radar | Graphical Forecast | Graphical Forecast
Decision Support Page | Space Weather | Fire Weather | Marine | Submit a Report | Social Media

Storm and flooding observations can be submitted here. They will immediately alert a forecaster at our office in Fairbanks.

- Please contact National Weather Service 24/7 with any questions or observations:

- Phone: (907) 458-3708
- Email: fairbanks.weather@noaa.gov
- Please take photos or video of flooded areas. This will help improve our forecasts for your community.